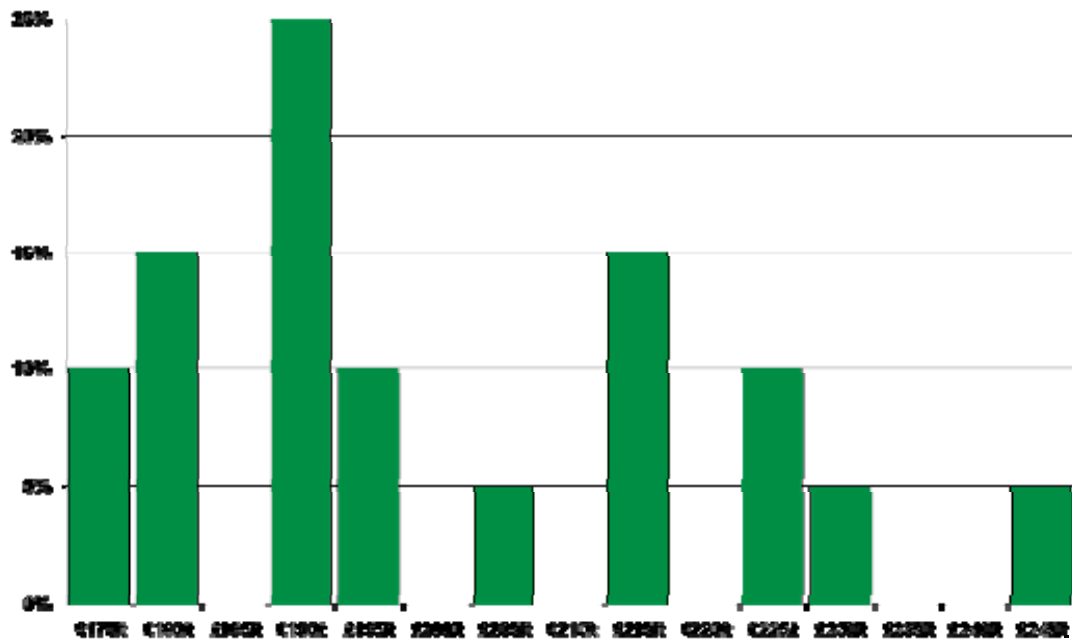


Summary

Ammonium Nitrate

In February, the overall national average reported price was £199/t, however with AN trading for £225/t and above at the time of writing, it's important to understand why this average, even at last month's prices, is too low and not truly reflective of the spot market.

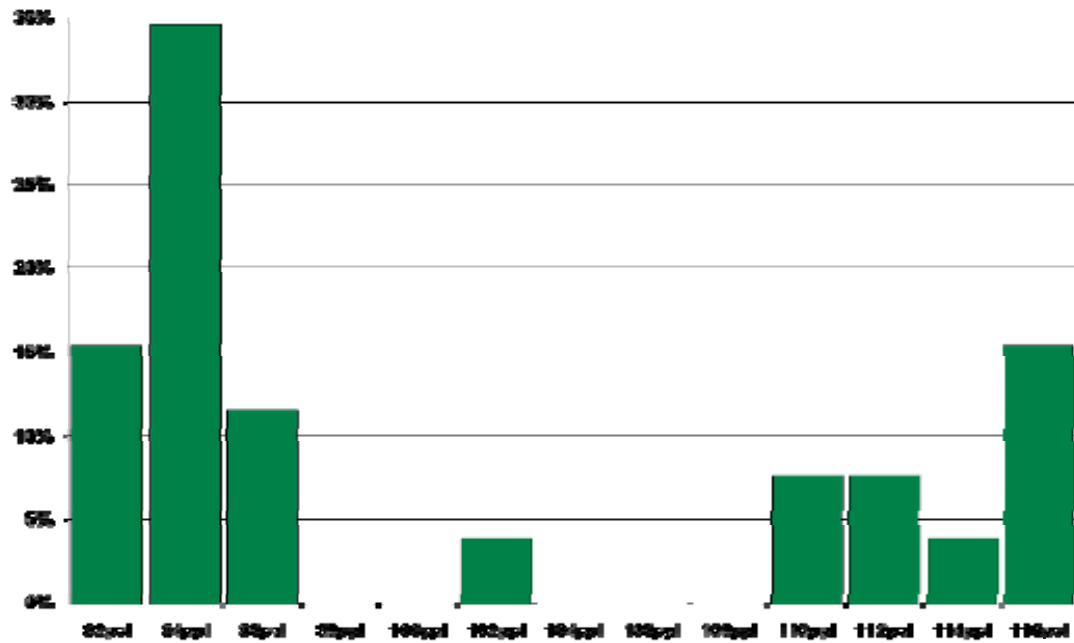
The graph below shows the proportion of responses at each price point. It can be seen that there are two peaks in the figures. The lower peak has an average price of £191.50/t which we interpret as product which was delivered this month but for which the deal was done and the prices fixed before Christmas. The second peak averages at £215.60/t, which is more reflective of the AN spot price and better matches other industry sources such as DairyCo.



This divergence in price only started to occur from around December. It represents a more rapid increase in price than had been seen in the earlier half of the season, where increases were more gradual and the product being delivered on farm more closely matched the prices available for purchase. It could also represent a rolling over of delivery date, extending the time period between purchase and delivery.

White Diesel

Last month we reported that there are also two distinct price groups for white diesel, suggesting two purchasing patterns. The graph below shows how polarised the price reports are.



Although reporting differences and the accidental inclusion of VAT could be a factor in some reports, we feel that on the whole, the differences are too great with the averages for the two groups at 93.1ppl and 112.6ppl. This would suggest that even with VAT as a factor, there is at least around a 3ppl discount available for bulk delivery.

Inputs price monitor results:

February

Survey 2010

Please note these figures are intended to be a benchmark for the month in question. They are not statistically significant and are not meant to provide a forecast for future months prices.



Fuel and energy costs

Red diesel

Price results for red diesel by region and by volume purchased.

Key: L = Lowest figure H = Highest figure Av = Average of all figures
Nat Av = National average figure **Averages:** In calculating averages, ALL of the data is used, not just the average of top and bottom data.

North East

Pence Per Litre	L	H	Av
0 -1999 L	44	50	47
2000 – 4999 L	46	46.9	46.45
5000 – 9999 L	47.6	47.6	47.6
10,000 + L	39	39	39

South West

Pence Per Litre	L	H	Av
0 -1999 L	42	42	42
2000 – 4999 L	42.5	50.75	47.74
5000 – 9999 L	44.73	44.73	44.73
10,000 + L	48	48	48

East Anglia

Pence Per Litre	L	H	Av
0 -1999 L	-	-	-
2000 – 4999 L	47.68	47.68	47.68
5000 – 9999 L	48.35	48.35	48.35
10,000 + L	39.46	45	42.42

North West

Pence Per Litre	L	H	Av
0 -1999 L	47.6	47.6	47.6
2000 – 4999 L	47.3	47.3	47.3
5000 – 9999 L	46.4	46.4	46.4
10,000 + L	-	-	-

South East

Pence Per Litre	L	H	Av
0 -1999 L	49	49.9	49.3
2000 – 4999 L	48	48	48
5000 – 9999 L	-	-	-
10,000 + L	-	-	-

Wales

Pence Per Litre	L	H	Av
0 -1999 L	49	51.18	50.09
2000 – 4999 L	49	49	49
5000 – 9999 L	-	-	-
10,000 + L	-	-	-

West Midlands

Pence Per Litre	L	H	Av
0 -1999 L	47	47	47
2000 – 4999 L	42.45	47.25	45.01
5000 – 9999 L	47	47	47
10,000 + L	46	46.4	46.2

Scotland/Northern Ireland (NI)

Pence Per Litre	L	H	Av
0 -1999 L	49	51	50
2000 – 4999 L	-	-	-
5000 – 9999 L	49	49.9	49.45
10,000 + L	-	-	-

East Midlands

Pence Per Litre	L	H	Av
0 -1999 L	-	-	-
2000 – 4999 L	45.9	47.55	46.82
5000 – 9999 L	50	50	50
10,000 + L	46	46	46

National Average

Pence Per Litre	L	H	Av
0 -1999 L	42	51.18	48.22
2000 – 4999 L	42.45	50.75	46.96
5000 – 9999 L	44.73	50	47.87
10,000 + L	39	48	44.08

Comments box

February saw reports of red diesel prices range from 39 to over 51ppl with a national average for all deliveries of 46.92ppl, a slight drop on last month. Although there are variations between regions, national results generally show that better deals were available on the largest orders. The start of March has seen reports of upward movement in the price of gas oil, with spot price for Brent Crude at £78.51 a barrel at the time of writing. Analysts are predicting a further limited upward trend despite larger than usual reserves for the time of year and a recent US announcement, increasing it's inventories of crude oil and gasoline.

Electricity

Pence / kwhr	Peak			Off peak		
	L	H	Av	L	H	Av
North East	8.57	9.6	9.09	5.4	6.2	5.8
East Midlands	7.9	10.68	8.86	3.16	5.0	4.32
East Anglia	7.71	10.1	8.77	4.67	10.1	6.75
South West	7.93	10.88	9.42	4.3	7.5	5.45
South East	8.7	13.5	10.78	4.77	4.77	4.77
North West	6.47	8.82	7.65	4.38	4.38	4.38
West Midlands	8.02	15.81	11.49	3.08	8.84	5.78
Wales	10	11.74	10.87	7.00	8.86	7.93
Scotland/Nl	12.4	14.8	13.60	6.5	6.5	6.5
National Average	6.47	15.81	10.06	3.08	10.1	5.76

Kerosene

Pence per Litre	L	H	Av
North East	39.95	43.78	41.77
East Midlands	37.5	45.97	40.52
East Anglia	42.79	42.79	42.79
South West	33	44.9	39.64
South East	42	44.5	43.25
North West	40.5	40.5	40.5
West Midlands	36	42.89	39.15
Wales	40.9	44.81	42.18
Scotland/Nl	45	46	45.73
National Average	33	46	41.38

Propane

Pence per Litre AV
30.75
33.50
29.00
30.8
-
34.68
28.74
-
-
31.51

White diesel

Pence per Litre	L	H	Av
North East	92.98	115.9	99.35
East Midlands	93	95	93.70
East Anglia	91.79	115.9	99.90
South West	93.29	113	102.52
South East	-	-	-
North West	92.9	93	92.95
West Midlands	90.95	115	99.95
Wales	111.9	114.9	113.40
Scotland/Nl	110	110	110
National Average	90.95	115.9	100.41

Water

Pence / cubic m	L	H	Av
North East	91.82	91.82	91.82
East Midlands	120.6	130.06	125.22
East Anglia	91.22	132.9	112.06
South West	107	138	122.5
South East	125	125	125
North West	-	-	-
West Midlands	111.67	130.06	120.87
Wales	111.67	111.67	111.67
Scotland/Nl	-	-	-
National Average	91.22	138	117.92

Comments box

Kerosene prices have shown little movement from January reports with white diesel increasing in price by just under 2ppl. The best buys were to be found in the Midlands. As in previous months the reported prices for white diesel were split between two averages with bulk purchases at around 93ppl and forecourt prices at almost 113ppl, these figures correspond to AA and FTA reports and could indicate a average saving of over 3ppl for bulk delivery. Electricity prices have fallen from January for both peak and off peak with reported prices for water dropping by over 8ppl

Fertiliser Costs: UK Produced Ammonium Nitrogen

£ / ton	L	H	Av	Volume purchased	L	H	Av	Nat Av
North East	-	-	-					
East Midlands	175	225	198.5	0 - 20 tonnes	190	230	210	210
East Anglia	186	193	189.5	21 - 50 tonnes	175	242	202	202
South West	180	242	208.67	51 - 100 tonnes	175	187	180	180
South East	190	190	190	Comments box				
North West	-	-	-	Although the national average for all reports rests at £199/t, it is clear that a significant number of these prices must have been agreed prior to February 2010. The median average of the highest 40% of purchases was £215.60/t reflecting more accurately current spot prices.				
West Midlands	179	214	192					
Wales	195	195	195					
Scotland/NI	175	222	198.5					
National Average	175	242	198.75					

Other fertilisers

Volume purchased			
NPK 20.10.10	Average = £243.50/t	All less than 33t volume	

Comments box
Reported prices for 20:10:10 are up on last month by around £20/t, reflecting some of the movements seen in the price of nitrogen. It should also be noted that this is based on a smaller order than last month.
In recent months, the overall average for AN has started to differ significantly from the spot price available. To compensate for this, future reports will give a detailed breakdown to provide more clarity between reported spot prices and the responses that are based on delivered goods, where the price may have been agreed in previous months.

Chemical costs

Chemical	£ / Litre	£ / Pack
Glyphosate e.g. Roundup	£3.15	
Metazachlor e.g. Butisan		£71.80
Clomazone 360 e.g. Centium	£104.42	
Flufenacet plus pendimethalin e.g. Crystal/Ice (10L)		£81.60
Flufenacet plus diflufenican e.g. Liberator (3L)		£198.36

Comments box
Glyphosate reports show a fall in price of around 40ppl from January 2010 prices.

Animal feed

Animal feed: Livestock

Livestock feed types	North West	North East	Wales	West Midlands	East Midlands	East Anglia	South West	South East	Scotland/ NI	Nat Av
Lamb creep – 16–18%		200	172							186
Ewe nuts – 16%		182	174	179			228		185	189.6
Dairy concentrate – 18%	178			316 (o)	186		178.6	188	194	182.11
Calf weaner pellets – 18%		276		340 (o)	240		188.5			223.25
Calf weaner pellets – 18%										
Poultry feed types	North West	North East	Wales	West Midlands	East Midlands	East Anglia	South West	South East	Scotland/ NI	Nat Av
Layers mash – 17–21%										
Broiler chick crumb	266.71						244			255.36
Broiler grower pellet/mash	238.77	200					256			231.59
Turkey starter crumb							255			255
Turkey grower pellet							270			270

Comments box

Ruminant feed prices are generally up on last month with lamb creep holding steady. The average price for ewe nuts was lifted by the high of £228/t in the South West, the the majority of values around £180/t. Organic values reported this month of £316/t for dairy concentrate, £340/t for calf pellets and £356/t for ewe nuts have been excluded from the national averages. Prices reported for broiler feed in February are comparable to the January prices.

Please continue to tell us what products you wish to see included in the price monitor – email: inputs@nfu.org.uk



To make the most of this resource please do continue to submit your prices on a monthly basis. The more results we receive, the more accurate the data.



inputs@nfu.org.uk