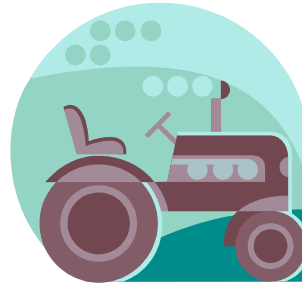


With an area of **6,707km<sup>2</sup>**, **Devon** is the largest county in the South West covering **28.1%** of the SW's land area.



**485,751.5 Ha** of Devon's land area is **farmed** under a commercial farm holding (**72.4%** of Devon's land area).

## 68.8%

...of Devon's farmed land is owned by the farmers managing it.



**Gross Output = £780 million**

**GVA = £319 million**



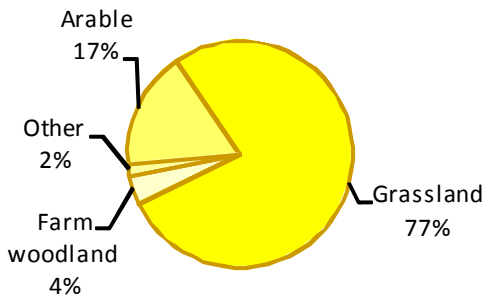
There are **8,162** commercial farm holdings in Devon (32.1% of those found in the South West).

**18,577** directly employed in agriculture in Devon...

That's 30.4% of the SW's farm workers.



### Proportion of different land use types in Devon's farmed area.



### Did you know...



Devon is home to the largest area/number of: Winter barley; oats; crops for stockfeed; maize; cattle (both dairy and beef); breeding pigs; sheep; and total poultry

Of the **81,349** Hectares of arable farmland, **64.4%** (52,415.1Ha) is **cereal crops**. That's 10.8% of Devon's



farmed area and 17.5% of all the South West's cereal production.



Devon's **horticultural** sector is comparatively small, covering 0.4% of Devon's farmed area (**17.4km<sup>2</sup>**) and contributing **17.4%** of the South West's fruit and vegetable production.

Total expenditure on environmental stewardship schemes in Devon in 2011/2012 amounted to £15.9 million.

According to the Countryside and Community Research Institute, for every £1 spent on stewardship activities, the total output in the local economy (within 40 minutes of the farm) is £1.42.

That's a £22.6 million contribution to the local economies in Devon.



593,719 cows  
33% of SW total cows



1,302,213 sheep  
45% of SW total sheep



85,599 pigs  
22.1% of SW total pigs



6,105,021 poultry  
31.4% of SW total poultry