

The NFU Democratic Structure

The NFU is governed by its Constitution and Rules. Under the Constitution and Rules the NFU shall maintain a number of bodies, which are responsible for the Governance of the NFU.

National Officeholders

Consisting of the President, the Deputy President and the Vice President elected in accordance with the Constitution and Rules.

NFU Council

The governing body of the NFU, an elected body of farmer members that meets quarterly.

Comprises:

- ◇ Council Representative of each county;
- ◇ County Chair of each county;
- ◇ Welsh Representatives;
- ◇ National Officeholders;
- ◇ National Commodity Board Chairs;
- ◇ Representatives of Farmer & Grower Controlled Business Sector Members as approved by Council from time to time;
- ◇ Legal Board Chair;
- ◇ A representative of the National Pig Association;
- ◇ Representatives of other agricultural associations as Council may determine from time to time;
- ◇ A representative of the Young Farmers' Club.

Governance Board

Responsible for setting the financial strategy, annual budget and management of resources of the NFU. Comprises National Officeholders, Director General, NFU Cymru President, five National Commodity Board Chairs and Regional Board Chairs, each elected by Council.

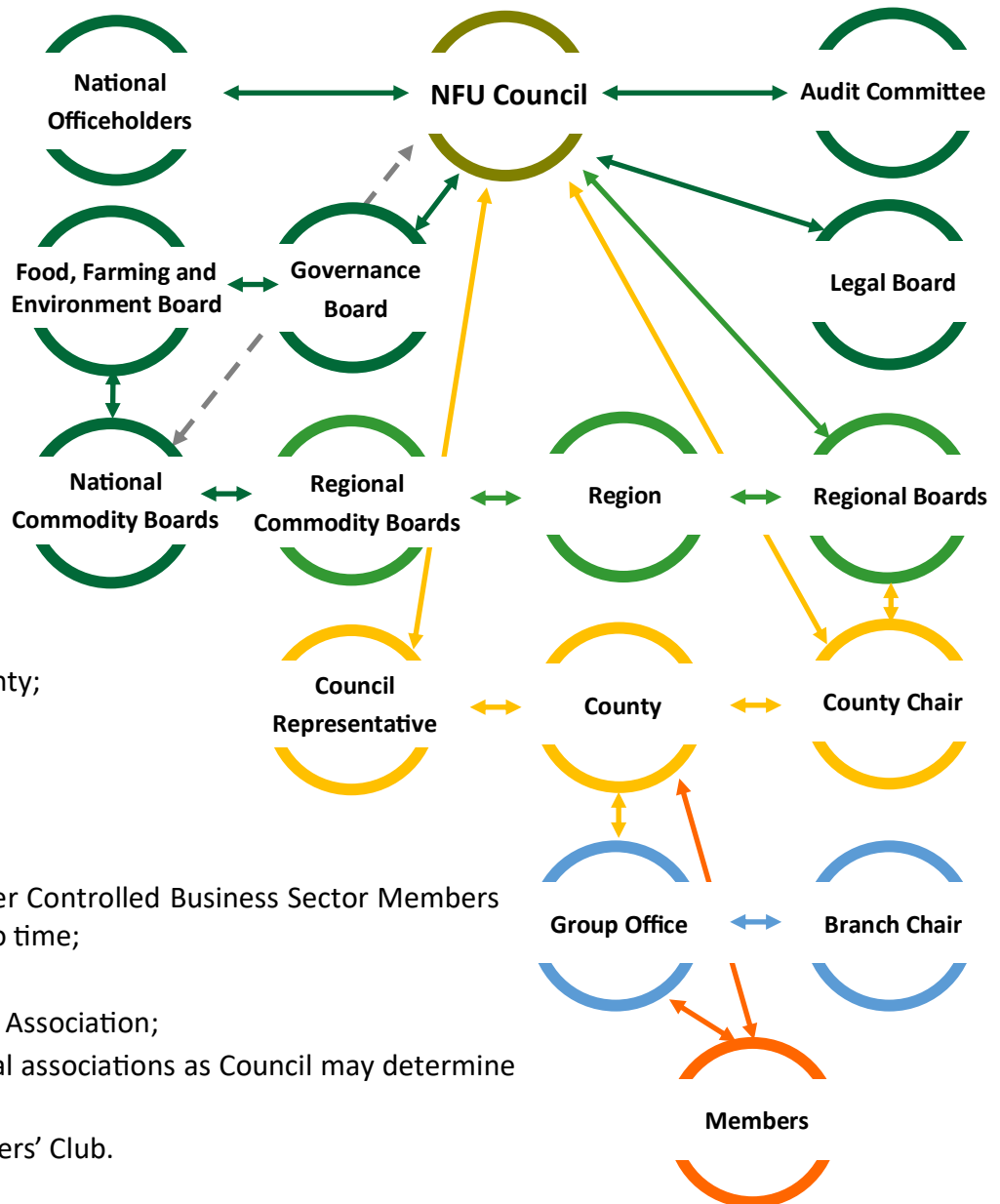
Food, Farming and Environment Board

Responsible for determining NFU's policy priorities and setting its work programme. Comprises National Officeholders, Director General, NFU Cymru President National Commodity Board Chairs and the Director of Policy.

Audit and Remuneration Committee

Responsible for reviewing the NFU's financial procedures and setting the honoraria of those entitled.

Comprises: Five Council members (not members of Governance Board, Food, Farming and Environment Board or Legal Board) elected by Council.



National Commodity Boards

Elected and **Selected** Boards in respect of the following:

- ◇ **Combinable Crops**
- ◇ **Dairy**
- ◇ **Livestock**
- ◇ **Poultry**
- ◇ **Horticulture and Potatoes**

Regional Commodity Boards

Each Region may establish and maintain a regional commodity board in respect of the above, with the addition of Sugar.

Regional Boards

Each Region has a Regional Board which comprises County Chairs of each county in the Region, Council Representatives of each county in the Region and the Chair of each Regional Commodity Board.

Legal Board

Responsible for the management and strategy of the Legal Assistance Scheme and its funds.

