

BLUEVAC® BTV8

- 12 months' protection for both cattle and sheep in one single pack.
- Can be used during pregnancy and lactation.

BLUEVAC® BTV8 vaccination protocol



AHDB Dairy Board chairman and West Sussex farmer Gwyn Jones was one of the first farmers to vaccinate his livestock last time bluetongue threatened our shores.

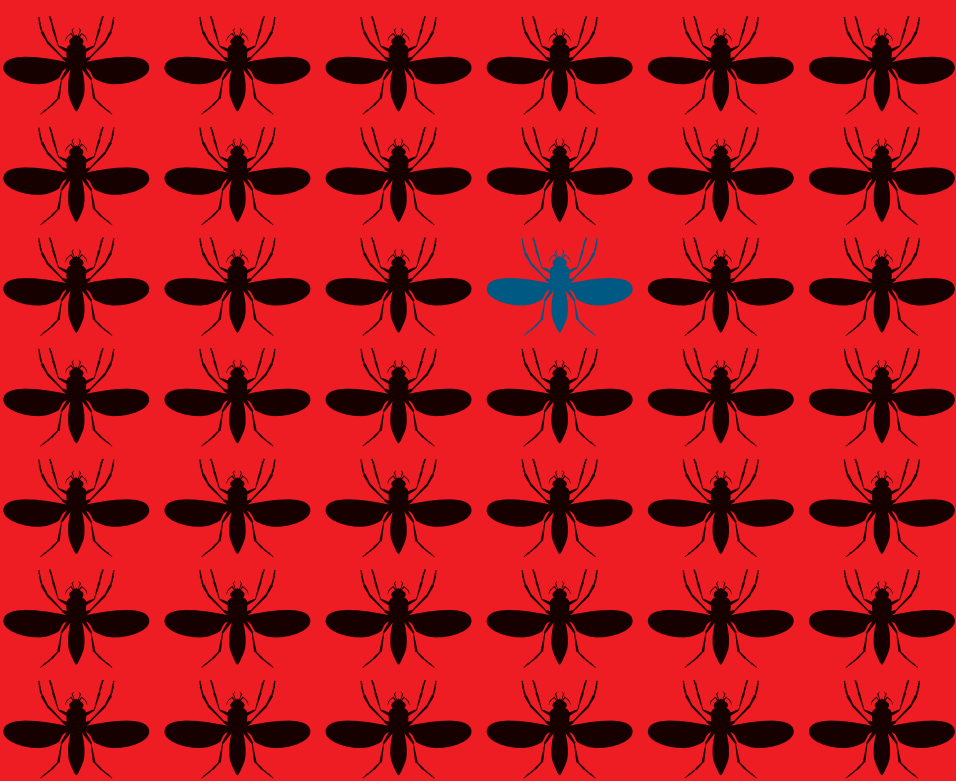
"Farmers in the south and east of England will rightly weigh up the 2016 disease risk against the cost of vaccinating. But if we do see the disease hit the UK once again the cost will be considerable. I urge you to vaccinate – not only to protect your own livelihoods, but also those of your colleagues in the rest of the country."



CONTACT YOUR VET PRACTICE
TODAY TO ORDER YOUR VACCINE

BLUETONGUE... IT JUST TAKES ONE VACCINATE NOW!

Don't leave the health of our nation's livestock to chance.



BLUETONGUE... IT JUST TAKES ONE PROTECT YOUR LIVESTOCK & YOUR COUNTRY, VACCINATE NOW!

References
1.DEFRA; Risk assessment for Bluetongue Virus (BTV-8); risk assessment of entry into the United Kingdom. Qualitative Risk Assessment; February 2016. 2.Szmaragd et al (2010) The Spread of Bluetongue Virus Serotype 8 in Great Britain and It's Control by Vaccination. PLoS ONE.

Use medicines responsibly.
Please visit www.noah.co.uk/responsible for more information.

Bluevac® BTV8, [POM-V], is an inactivated vaccine containing Bluetongue virus, serotype 8. It is only available on prescription by a veterinary surgeon, from whom advice should be sought. Property of CZ Veterinaria SA. For information regarding side effects, precautions, warnings and contra-indications please refer to the datasheet at www.noahcompendium.co.uk. Further information is available from MSD Animal Health, Walton Manor, Walton, Milton Keynes, MK7 7AJ. Tel: 01908 685 685 • vet-support-uk@merck.com ©2016 Intervet International B.V., also known as MSD Animal Health. All rights reserved. 77598/June 16/PMN

www.msd-animal-health.co.uk

BLUEVAC®
BTV8

MSD
Animal Health

BLUEVAC®
BTV8

MSD
Animal Health

BLUETONGUE

- A non-contagious, viral disease transmitted by midges.
- A devastating notifiable disease.
- Affects mainly sheep and cattle.
- Signs of disease: high fever, excessive salivation, swelling of the face, lips and tongue, blueness of the tongue and death.
- Consequences of the Bluetongue virus:
 - Welfare issue & financial loss
 - Milk drop
 - Reduced growth
 - Reduced fertility
 - Treatment costs
 - Restricted movements



MSD ANIMAL HEALTH
IS PROUD TO SUPPORT



CLINICAL SIGNS



EYES

Weeping or watery eyes and pinpoint blood spots. Swelling of the neck and/or face, especially around the eyes and the muzzle.



NOSE

Sores around the nose and mouth. Eye and nasal discharge which becomes thick and crusty is common in sheep.



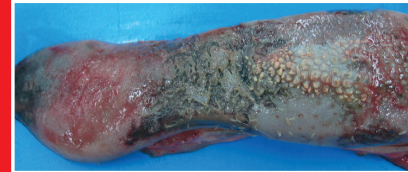
MOUTH

Open sores or blisters on the tongue, mouth or nostrils are common. Sores in the mouth may result in drooling. Redness of the skin on the face, neck and possibly body.



TONGUE

Swelling of the lips and tongue gives a blue appearance (this sign is not often present).



TEATS

Swollen and/or reddened teats can be seen in cattle. Lesions appear as acute sunburn. Fever, depression, ulcers and a drop in milk production may be observed.



LAMENESS

One of the most common signs of bluetongue disease.



LEARNING FROM THE LAST OUTBREAK

With an 80% chance that Bluetongue, the devastating midge-borne virus, will reach GB once again later this summer¹, vaccinating the country's stock is the only way to prevent the disease from spreading like wild fire.

Bluetongue first reached our shores in September 2007 after its destructive spread across mainland Europe. Fortunately, widespread use of vaccine in cattle and sheep in 2008 across GB – coupled with cooler temperatures that year – successfully controlled the disease².

However, after so many years, the majority of the country's sheep and cattle are susceptible again and need protection urgently.



If you suspect signs of the disease, you must notify the Animal and Plant Health Agency (APHA) immediately. For further information contact:

<https://www.gov.uk/guidance/bluetongue>

Defra Helpline on 03000 200 301

CONTACT YOUR VET PRACTICE TODAY
TO ENSURE YOUR STOCK ARE PROTECTED

