



4X4ANDSUV

TYRE & WHEEL RANGE

11TH EDITION

THE UK'S ONLY NETWORK OF 4X4 TYRE CENTRES

UK'S LARGEST RANGE OF 4X4 AND SUV TYRES
ALLOY & STEEL WHEELS
VAST STOCK OF PREMIUM
MID-RANGE • VALUE TYRES
UNRIVALLED PRODUCT KNOWLEDGE

WWW.4SITE4X4TYRES.CO.UK

0870 112 9401



We are the market
leader for all 4x4
and SUV tyre
solutions.

We have been operating in the 4x4 market for over 30 years and are now the largest and only dedicated supplier of 4x4 tyres in the country. We are made up of a national network of hundreds of 4x4 tyre specialists who not only have access to a massive stock range, but moreover pride themselves in delivering a consistent consumer experience always focusing upon what is the right solution for the consumer.

The 4SITE 4x4 Tyres brand is also supported by a customer services team that love and live by 4x4 and between them have over 120 years of unrivalled industry experience. They give impartial advice to help guide both consumers and our tyre specialists to make informed decisions by offering 4X4 expertise and knowledge on any aspect of the market.

In 2016 we launched our state of the art e-commerce responsive consumer website www.4site4x4tyres.co.uk that not only allows consumers to find their perfect tyre or wheel, but moreover enables them to book online and have them fitted within 24 hours.

We work closely with tyre manufacturers on product development and are the official distributors of 4x4 tyres for BF Goodrich, General Tire, Falken, GT Radial, Runway and Insa Turbo Tyres.

Thanks to our technical expertise, product availability & wide stock profile and unbeatable customer service, we have recommended tyre solutions to organisations such as the military, utility companies, the Environmental Agency and the Forestry Commission so you can see why we believe we are the 4x4 and SUV drivers only really credible tyre & wheel solution provider. Our head office is located in Southam. To find out more about 4SITE 4x4 Tyres please visit our website or call us on: 0870 112 9401.

CONTENTS

The Knowledge

2	Introduction
4	Welcome to the 4X4 and SUV guide
5	The right size
6 - 7	Meet the team
8 - 11	Tyre care & safety tips
12	Reading tyre markings
13	Different 4X4 and SUV markings
14 - 15	Speed symbol & Load index
16 - 17	Car maker specific tyre markings
18	Tyre labelling regulations
19	Tyre labelling the facts
20 - 21	Off road tyre grading index
22	Safety in and around 4x4 vehicles
23	Vehicle technical information

The Tyres

26 - 35	General Tire
36 - 39	BFGoodrich
40 - 43	Falken
44 - 51	Pirelli



WELCOME TO THE 4X4 GUIDE

UK'S LARGEST and most comprehensive range of 4X4 & SUV tyres and Wheels.

In this product guide you will find the UK's largest and most comprehensive range of 4x4 tyres and wheels. We are proud to bring you this guide having made every effort to use our industry leading expertise in order to provide the most accurate product descriptions, technical information and practical advice possible.

THE RIGHT SIZE

Making the right choice.

There are many off and on-road sizes that may work with your vehicle. Within those sizes there are also many different types of 4x4 tyre.

Some differences in tyres are cosmetic whilst others have been engineered to maximise your vehicle's performance in specific ways. Some tyres are designed to maximise on-road handling as well as performance and others are designed to gain maximum traction over certain surfaces such as mud, sand and snow. There are also a wide variety of tyres in between these two extremes that provide a good standard of on-road performance, with varying degrees of off-road competency.

The price of 4x4 tyres usually varies in line with the level of technology and quality of tyre construction.

This guide is intended to provide an impartial easy to understand information. Don't forget if you still have questions you can contact our team. If you want to re-size then it is important to seek expert advice. Remember that your tyres are your vehicle's only contact with the road, so getting this right is very critical for optimum performance and tyre safety. Remember; if you change your tyre and wheel size this will have an affect your steering, braking, cornering, speed dial readings, ABS, gearing and 4X4 differentials.

The 4Site 4x4 technical team can guide you through this process and give you responsible advice regarding fitments.

True Professional Advice.

The 4SITE 4x4 technical team only recommend fitments that are proven and that we know will work properly with your vehicle. Consumers can be given differing opinions, as there are sometimes grey areas. However, in the interests of maximum safety and performance (*which is what selecting tyres is all about!*) Our technical team will use their best professional judgement and many years of experience to advise you as best as they can.

SPECIAL NOTE: It is strongly recommended that tyres on 4x4 vehicles are used in identical sets of 4, (same size, make, pattern, load index/speed symbol). The vehicle manufacturers' recommendations should also be followed.

MEET THE TEAM



Dave

.....
With over 34 years in the tyre industry, Dave has extensive knowledge of all aspects of the 4x4 industry from tyre fitting to retail management. Alongside his many responsibilities, Dave has a particular skill in recommended conversion sizes, as well as advising manufacturers on tyre sizes and patterns that are required for the 4x4 sector.

Favourite 4x4 vehicle:
Land Rover Classic Edition

“We are very proud to be the driving force behind new tyre sizes in various tread patterns including all terrains especially for the Land Rover family, many of which were first in the industry.”

Simon

Simon has a particular passion for helping customers through the technical aspects of the 4x4 market and with over 18 years of experience he’s well equipped to do so! Simon greatly enjoys all aspects of 4x4 vehicles, as well as being a huge supporter of Tottenham Hotspur.

Favourite 4x4 vehicle:
Land Rover Velar



Matt

After starting his career fitting tyres, Matt has become a specialist in wheel & tyre combinations, especially for fleet customers. He greatly enjoys an active outdoor lifestyle; including cycling & motorsports.

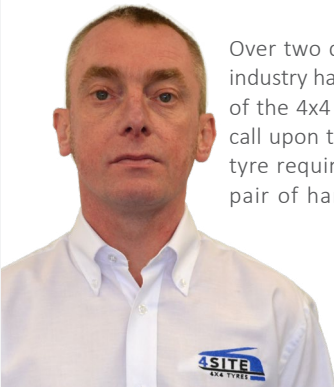
Favourite 4x4 vehicle:
Series 2 Land Rover



Tom

As a born petrol head, Tom has always been keen to bring his enthusiasm for cars & 4x4s into his working life. As a key part of the 4x4 team for over 13 years, Tom is responsible for website enquiries, technical support and working with manufacturers to provide customers with solutions for their 4x4 needs.

Favourite 4x4 vehicle: *Land Rover Spectre Defender Edition*



Ian

Over two decades working in the tyre industry has given Ian a vast knowledge of the 4x4 and car market that he can call upon to help customers with their tyre requirements. Ian is an excellent pair of hands, whether you’re a 4x4 rookie or an old hand!

Favourite 4x4 vehicle:
Lada Niva

Dan

After developing his hands-on skills from working in the retail sector for over 13 years, fitting 4x4 and car tyres, Dan made the move into the 4Site 4x4 team 4 years ago to offer his practical skills to customers seeking advice & support on 4x4 products.

Favourite 4x4 vehicle:
Range Rover HSE



Andy

As the newest member of the team (but still with over 7 years of experience in the tyre industry) Andy has been through the stringent training programme to embed his 4x4 technical data and brand knowledge, combined with his own passion for the industry.

Favourite 4x4 vehicle:
Toyota Bundera



TYRE CARE & SAFETY TIPS

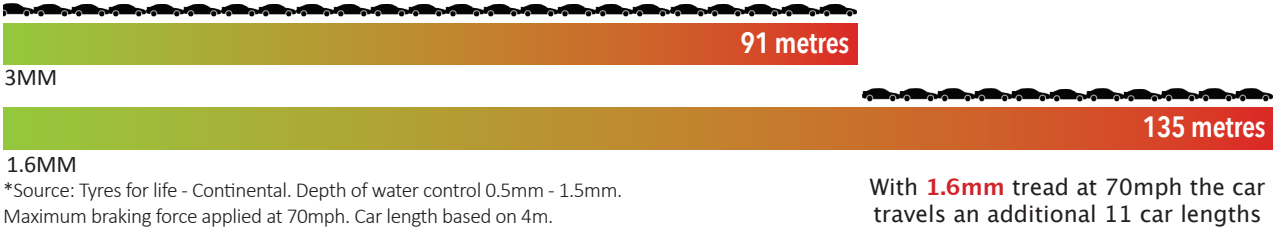
- Always check that your tyres are inflated to the correct tyre pressure. We recommend they are checked at least once per week and must be done when the tyres are cold.
- Make sure you regularly check for and remove foreign objects such as stones from in between the tread blocks. If you allow them to become embedded they may work themselves into the casing and cause tyre deflation.
- Check your tyres regularly for uneven wear. Uneven wear may indicate a problem with the steering geometry of the vehicle and an adjustment may be needed to the vehicle ‘toe-setting’ or other alignment angles. In some uneven wear may indicate a more serious problem with worn or damaged components in the suspension/steering assembly.
- Symptoms of uneven wear may also be accompanied by anomalies such as the vehicle pulling to one side.
- Ensure that all oil and similar petroleum products are not left in contact with your tyres for a long period of time. These products can cause separation within a tyre if they are left in contact with the surface of the tyre.
- Every time a tyre is replaced or repaired make sure a new valve is fitted to that tyre, as sometimes it can be damaged during the removal process. Good tyre dealers should always do this unprompted, but always check beforehand.
- Having your wheel and tyre assembly checked for balance regularly is important, as a unbalanced wheel will cause uneven tread wear as well as vibrations through the steering.
- Check tyre side-walls for bulges or cuts and anything else out of the ordinary, as this is especially important when using your vehicle off-road frequently. The potential for this sort of damage can be reduced if you buy tyres with reinforced sidewalls, such as the General Grabber X3.

Always check that your tyres are inflated to the correct tyre pressures.

Always make sure your tyres are above the legal limit of 1.6mm

- Always make sure your tyre is above the legal limit of 1.6mm. We recommend tyres are changed before this point as braking and grip on a badly worn (however still legal) tyre can be up to 50% less efficient than a new tyre. Also, worn tyres will aquaplane across water more readily than a new tyre, which displaces water much more efficiently.

- Always look to change all 4 tyres at a time or at least ensure there is no more than a couple of mm difference between the front and rear tyres. If less than 4 tyres are to be fitted ensure you fit at least a pair, with the 2 new ones fitted to the REAR and the next best two tyres fitted on the front.*
- The mixing of radial and X-ply tyres on a vehicle is not recommended. However if you do mix you must fit X-ply to the front axle and radial to the rear axle (legal requirement).
- Always ensure that tyres fitted to your vehicle have the correct specification load and speed rating. Most modern 4X4 tyres have a reinforced load carrying, however car tyres of the same size have a reduced carrying capacity. If you are not sure of the correct load/speed rating that you require please call your local 4Site 4X4 office.



* On some 4X4 vehicles serious transmission damage can occur if all 4 tyres are not replaced at the same time. If in doubt please check the vehicle’s handbook.

TYRE CARE & SAFETY TIPS

Can you mix 4x4 tyre patterns on a vehicle?

The simple answer to this is No! We strongly recommend that 4x4 vehicles are fitted with identical sets, with all four tyres being the same brand, size, pattern and load index/speed symbol. The reason for this is that the rolling circumference and overall diameter specifications can vary dramatically, between brands and patterns, as all tyres are made within a tolerance from the standards set by the governing body ETRTO (The European Tyre and Rim Technical Organisation). This is important advice as some vehicles are very sensitive to tyre mixing.

Should I use winter tyres on my vehicle?

As summer tyres stiffen when the temperature drops, it is advisable that cold weather/ winter/all-season tyres are used at certain times of the year. At below 7 degrees, the tyres' rubber compound gives much higher safety margins, giving better braking and handling performance on damp, cold, icy and snow covered roads. Leading manufacturers, like General Tire and BFGoodrich, now produce all-terrain tyres that are marked 3 peak mountain snowflake (3pmsf), classing them as cold weather/ winter/all season tyres. This lets you fit one set that can be used all year round, rather than having two sets – a cost effective alternative!

What effect do off-road tyres have on my 4x4's towing limit?

Off-road tyres, such as a mud terrain, make little difference to the 4x4's towing limit, providing they are marked with the correct load index.

Q&A

Expert advice from 4SITE 4x4 TYRES.

How much bigger can I go on tyre size without needing to modify my vehicle's suspension, brakes, steering and bodywork?

The official answer will be to always make sure that the overall diameter (maximum dimensions from ETRTO) of the tyre being fitted, is within the tolerance of +1.5% to -2.5%, in relation to that of the original tyre fitted. It is essential to make sure that the new tyre being fitted has a speed symbol and load index suitable for use on the vehicle, with the load index being no less than what the vehicle was originally fitted with. However, you can fit taller tyres if the vehicle has had its suspension modified. But it is important to note that when this happens, the new fitted wheel and tyre does not come into contact with any mechanical component or bodywork of the vehicle or protrudes the body-line of the vehicle.

Are remould tyres safe to drive on the road?

If these tyres are not marked NHS, which stands for non-highway service, then yes they are safe to drive on the road. Brands like Insa Turbo use quality donor tyres which have no punctures, shoulder or suspension wear. They strip the tyre back to its bare casing and X-ray it for any belt slips or penetrations that the naked eye will be unable to see. The tyre is then made by adding the required tread pattern for its product range. Quality control is first class and the entire range of Insa Turbo offers a speed rating more than sufficient for roads in the UK. So yes, they are safe!

How long will an all-terrain tyre last, if used mainly on the road?

This is an impossible question to answer as it will always depend on the manufacturer. But how the tyre is being looked after, the right tyre pressures for the vehicle, correctly balanced wheels and of course the conditions of service will all have a significant bearing on how long it will last.

What is the lowest tyre pressure I can safely run on the road if it's just temporarily over short distances between green lanes?

Technically, the pressure is required to carry the load regardless of whether the tyre is being used on or off-road.

Do I need to declare all-terrain tyres, or remoulds, as a modification to my insurance company?

We have not heard of any company specifying the need to declare all-terrain, mud terrain or remoulds on a vehicle. However when changing tyre size some insurance companies prefer to be notified.

Can I use tubes in a tubeless tyre?

Most manufacturers will strongly advise that their tubeless tyres are kept tubeless. However there are some instances when you would need to fit a tube if the tubeless tyre is being fitted to a tube type wheel (the tyre manufacturers' recommendations should always be followed). You can use tubes in tubeless tyres providing that: (1) tubes are made for the tyre they are being fitted to; (2) all builders' tags (manufacturers' labels) inside the tyre are removed, otherwise they will chafe the tube and may cause a deflation; and (3) French chalk (or industrial talc) is used when fitting a tube to prevent friction.

If I modify my tyres' tread to make it more aggressive, will it still be legal to use on the road?

Providing the tyres are suitable for highway service and carry the correct load and speed index, and do not protrude the body-line of the vehicle, then they should be legal for use on the road.

READING TYRE MARKINGS


DOT: Department of Transportation (USA)

Week and Year of manufacture

Code of the production factory

Size code

Optional code



255 - tyre section width in mm

55 - tyre aspect ratio
(ratio of height to section width H/S: 0.55)


R - radial construction

18 - nominal rim diameter in inches


109 - load index

H - speed symbol

Regulation ECE030 homologation reference with approval number




New regulation: Directive 2001/43/EC (S = sound). This directive specifies tyre noise limits, along with the relevant type-approval mark denoting compliance. The number relates to the country where approval was carried out. The S suffix = sound. Regulation on 1st October 2011 for all replacement market tyres.




3 Peak Mountain Snowflake (3PMSF)

Additional marking on M+S tyres indicating they are designed for severe snow conditions.



GREEN X

Marking which indicates a tyre with a level of efficiency among the highest in the market, while maintaining all the legendary Michelin advantages of long tyre life, safety and other performances.




Range name

Definitions of specific tyre markings:

N1

* } Car maker specific tyre markings (see details Page 9)

MO



DIFFERENT 4X4 AND SUV MARKINGS

MILLIMETRIC

255/55 R 18

Tyre size:

255 = section width in mm

55 = aspect ratio (sidewall height to section width)

R = radial construction

18 = nominal rim diameter in inches

LATITUDE SPORT

Tread pattern

109Y

Load index/Speed symbol

INCHES

7.50 R 16

Tyre size:

7.50 = section width (inches)

R = radial construction

16 = nominal rim diameter in inches

C

Commercial vehicle tyre

4X4 O/R XZL

Tread pattern

116N

Load index/Speed symbol

FLOTATION

31 X 10.50 R 15

Tyre size:

31 = external diameter (inches)

10.50 = section width (inches)

R = radial construction

15 = nominal rim diameter in inches

LT

Category (Light Truck)

ALL-TERRAIN T/A K02

Tread pattern

109S

Load index/Speed symbol

- Distinctive features of the various markings**
- M+S "Mud and Snow": appears on many 4x4 tyres*.
 - P (prefix) "Passenger": on tyres of US origin in the car category.
 - LT "Light Truck": on tyres of US origin in the 4x4 category.
 - C Commercial vehicle tyres for service on light duty vehicles or, on US tyres, the load range which equates to a level of load (may be C-D-E).
 - Reinf (or Reinforced) refers to a tyre, which has a higher load rating than would normally apply to this size.
 - XL (or Extra Load) refers to a tyre, which has a higher load rating than would normally apply to this size.
- *The M+S marking appears on most MICHELIN 4x4 products with the exception of 4x4 Diamaris, Latitude Diamaris and Latitude Sport.

SPEED SYMBOLS & LOAD INDEX

The majority of tyres have codes marked on them, which correspond to their load carrying and maximum speed capabilities. The speed symbol indicates the maximum speed at which the tyre can carry the load corresponding with its load index.
(Except for speeds above 131 mph - see the notes below).

- Tyres marked ‘VR’ within the size designation are designed for speeds in excess of 131 mph.
 - Tyres marked ‘ZR’ within the size designation are designed for speeds in excess of 149 mph.
 - Tyres marked ‘V’ in conjunction with a load index, e.g. 93V are suitable for speeds in excess of 131 mph & up to 149 mph.
(The load index given is for a speed of 131 mph and the load must be reduced by 3% for every increment of 6 mph up to 149 mph.)
 - Tyres marked ‘W’ in conjunction with a load index e.g. 83W, are suitable for speeds in excess of 149 mph & up to 168 mph.
(The load index given is for a speed of 149 mph and the load must be reduced by 5% for every increment of 6 mph up to 168 mph.)
- NB: tyres with a ‘W’ speed symbol may incorporate ‘ZR’ in the size marking.
- Tyres marked ‘Y’ in conjunction with a load index, e.g. 83Y, are suitable for speeds in excess of 168 mph & up to 186 mph.
(The load index given is for a speed of 168 mph and the load must be reduced by 5% for every increment of 6 mph up to 186 mph.)
 - Where the service description is placed within brackets e.g. (95Y), the tyre is suitable for speeds over 186 mph, please contact Michelin for details.

SPEED SYMBOL	MAX SPEED KM/H	MAX SPEED MPH (Approx)
J	100	62
K	110	68
L	120	75
M	130	81
N	140	87
P	150	93
Q	160	99
R	170	106
S	180	112
T	190	118
U	200	124
H	210	131
V	240	149
VR	>210	>131
W	270	168
Y	300	186
ZR	>240	>149

Corresponding to their load carrying and maximum speed capabilities.

LOAD INDEX	MAX LOAD PER TYRE (Kg)	LOAD INDEX	MAX LOAD PER TYRE (Kg)	LOAD INDEX	MAX LOAD PER TYRE (Kg)	LOAD INDEX	MAX LOAD PER TYRE (Kg)
62	265	78	425	95	690	111	1090
63	272	79	437	96	710	112	1130
64	280	80	450	97	730	113	1150
65	290	81	462	98	750	114	1180
66	300	82	475	99	775	115	1215
67	307	83	487	100	800	116	1250
68	315	84	500	101	825	117	1285
69	325	85	515	102	850	118	1320
70	335	86	530	103	875	119	1360
71	345	87	545	104	900	120	1400
72	355	88	560	105	925	121	1450
73	365	89	580	106	950	122	1500
74	375	90	600	107	975	123	1550
75	387	91	615	108	1000	124	1600
76	400	92	630	109	1030	125	1650
77	412	93	650	110	1060	126	1700
		94	670			127	1750

Load index is a numerical code associated with the maximum load a tyre can carry at the speed indicated by its speed symbol under service conditions specified by the tyre manufacturer.

Load index, speed symbol example: 91H
91 = Load index
(maximum load per tyre = 615kg)
H = Speed symbol
(maximum speed 210 km/h or approximately 131mph)
The load index (or two load indices in the case of single/dual fitments) and speed symbol are also referred to as the Service Description.

Extra Load or XL: This tyre has a higher load rating than would normally apply to this size.

Reinforced or Reinf: This tyre has a higher load rating than would normally apply to this size.

Load index is a numerical code associated with the maximum load a tyre can carry at that speed.

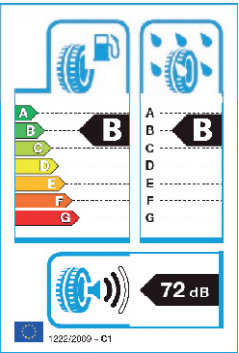
CAR MAKER SPECIFIC TYRE MARKINGS

In the absence of specific vehicle information, due to vehicle transmission sensitivities it is strongly recommended that tyres on 4x4/SUV vehicles are used in identical sets of 4 (same size, make, pattern, load index/speed symbol). The vehicle/tyre manufacturers recommendations should be followed.

OE Key	Car Maker /Vehicle	Commentary
*	BMW	
M3	BMW	
*MO	BMW/MERCEDES-BENZ	Shared Platform - E-Class and 5 Series
ME*	MERCEDES-BENZ / BMW	Shared Platform - E-Class and 5 Series
MO	MERCEDES-BENZ	
MO1	MERCEDES-BENZ	
MOE	MERCEDES-BENZ (Extended Mobility)	RunFlat
MOV	MERCEDES-BENZ	Mercedes Original Van / QTR 4 2018
AO	AUDI	
AO1	AUDI	
AOE	AUDI (Extended Mobility)	RunFlat/ QTR 4 2018
RO1	AUDI	
RO2	AUDI	
AR	ALFA ROMEO	
J	JAGUAR	
JLR	JAGUAR - LAND ROVER	
LR	LAND ROVER	
MGT	MASERATI	
N0	PORSCHE	
N1	PORSCHE	
N2	PORSCHE	
NA0	PORSCHE	QTR 4 2018
T0	TESLA	
VOL	VOLVO	
B	BENTLEY	

Continental

TYRE LABELLING REGULATIONS

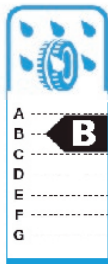
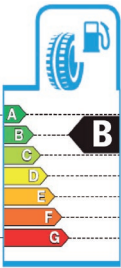


New European Regulation on tyre labelling came into force from 1st November 2012 and applied to tyres manufactured from 1st July 2012, for passenger cars, vans, 4X4s and trucks. The labels improve the information supplied to consumers with regards to safety (wet grip), and environmental matters (fuel efficiency and external noise). The Regulation does not apply to tyres that have been retreaded, studded, marked “for competition use”, or equivalent, or to certain professional off road tyres and vintage tyres. Truck tyres will not

need to have a label, however, the performance information on fuel efficiency and noise will still be published. For passenger car and van tyres, the information relating to the label will also be presented in a standardised format in tyre manufacturers’ technical documentation and web sites. The same information will also be provided on (or with) the tyre sales invoice supplied by the vendor to the consumer. The consumer will then have the chance to improve his or her product knowledge and to compare tyre performances.

FUEL EFFICIENCY

On the left of the label, an energy efficiency grading indicates the tyre’s contribution to fuel consumption and CO₂ emissions. Tyres are responsible for approximately 20% of a vehicle’s fuel consumption, mainly due to their rolling resistance. Reducing rolling resistance can therefore contribute significantly to improving the energy efficiency of road transport, hence reducing CO₂ emissions. In fact, it is the tyre’s rolling resistance level, measured on a machine, which determines its energy efficiency grade. On the label the tyre rolling resistance is expressed in grades from A to G. Grade A indicates the most fuel efficient tyres and grade G the least performing tyres in this category.



WET GRIP

On the right of the label is a scale grading the tyre’s wet road braking performance. Measurements are made on a vehicle under conditions defined by the European Regulation (speed, track characteristics, water depth, temperature).

- Tyres are graded from A to G with A indicating the highest wet grip performance
- The grade is determined by comparing the test tyre’s performance to that of a reference tyre.

EXTERIOR NOISE

Traffic noise is a major source of nuisance. The lower part of the label shows the level of exterior tyre noise emitted from the vehicle (not the interior tyre noise level heard by the driver) expressed in decibels.



Note: From 1st November 2016 all tyres which are manufactured will need to carry 2 Sound waves, 3 Sound waves can no longer be produced. Tyres with EU tyre label values with Rolling Resistance ‘G’ and Wet Grip ‘F’ had production stopped prior to 01.11.2014.

TYRE LABELLING THE FACTS

Tyre labelling specifies 3 criteria. The noise part of the label applies to external noise and it dose not apply to what the driver/passenger can hear from within the vehicle. The other two criteria, wet grip & fuel efficiency are extremely important and should be discussed with your local tyre expert before making a tyre choice.

To make the correct tyre choice you should consider the following main tyre requirements & functions.

ECONOMY	Life expectancy
	Retreadability
	Rolling resistance
	Price
ENVIRONMENTAL ASPECTS	Noise emission
	Materials demand
	Road Hazard resistance
COMFORT	Road bump absorption
	Interior noise
	Handling comfort
	Uniformity
DRIVING SAFETY	Brake distance
	Traction
	Lateral force
	Durability
	Ageing resistance
	Road hazard resistance

Always consult your local 4site 4x4 tyre centre for advice on your tyre choice.

A comparison of tests between a standard tyre test and label criteria.

A standard tyre test covers the following test criteria. In fact there are over 50 tests subjected to a quality tyre. Please see the chart below for a selection.

Test criteria	Tyre label	Tyre Test
DRY		
Driving stability	-	+
Handling	-	+
Braking	-	+
WET		
Braking	+	+
Aquaplaning	-	+
Aquaplaning - lat.	-	+
Handling	-	+
Cornering grip	-	+
NOISE		
Noise inside	-	+
Noise outside	+	+
Rolling resistance	+	+
Wear	-	+
PAK oil level	-	+
High speed	-	+

+	Included
-	Not included

Please do not purchase a tyre as you would white electrical goods by choosing the better label values, as you can see you need to consider all the above to make an informed decision taking into consideration all your driving requirements as well as the EU label values.

Off Road Grading Index Explained

To make it a little easier to select the right tyre, a good place to start is to think about what you intend to use your 4x4 for?



Choosing the right tyre can be difficult. Every tyre that a manufacturer makes is designed with specific strengths in mind. How well the tyre performs to these strengths depends on the construction methods, materials used and technologies applied in the design and testing process. 4x4 tyres by definition introduce even more variables than these into the mixing pot.

If you are intending to use your vehicle off road then you need to determine just how extreme the terrain is likely to be and how much time you are likely to spend on it.

General Grabber GT
ORGI rating of 1



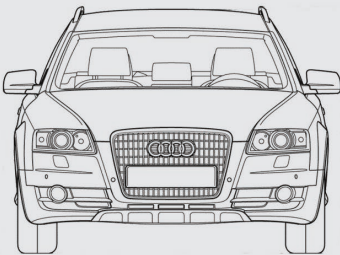
A more on-road, less aggressive tyre for everyday use

General Grabber X3
ORGI rating of 10

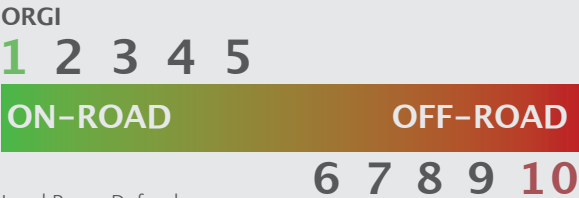


A full on off-road tyre with a aggressive pattern.

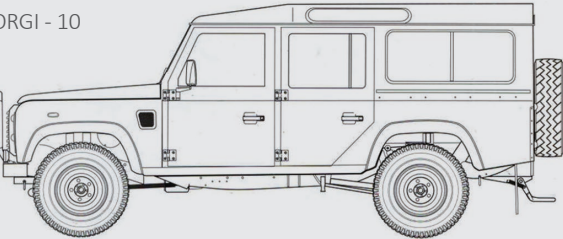
We have developed a unique ORGI guide which assigns every 4x4 tyre we feature with an off-road competency rating between 1 & 10. From here it is possible to disregard certain tyres as unsuitable and narrow the field of selection down.



Audi A4 All Road:
ORGI - 1



Land Rover Defender:
ORGI - 10



Note that this is a subjective rating. Each tyre is assigned its level of off-road ability according to a combination of our theoretical and practical experience, coupled with manufacturer and consumer feedback.

Also, note that generally the more aggressive the tyre the less competent it will be on road. Although the very best tyres like General Tire and BF Goodrich will still have good road manners, you will find that tyres generally become noisier when they are more off-road biased.

THE BASICS

Know the difference between momentum and acceleration. Momentum is the speed that the vehicle has already built up to allow you to go through a muddy patch or sand. Acceleration is what you use to build up speed. Don't try to suddenly accelerate hard when you hit mud or sand. If anything, this will increase your chances of getting stuck. Rather, build up the speed beforehand so that the momentum carries your through.

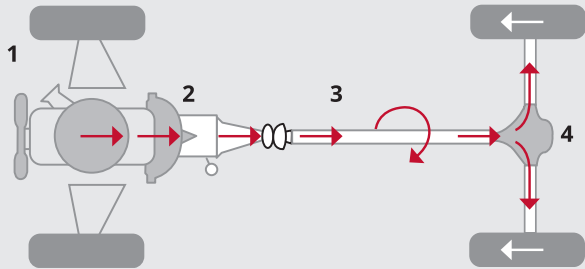
TYRE PRESSURE

One of the most crucial aspects to off-roading is understanding the absolute importance of tyre pressure.

Reducing tyre pressure increases the “flotation” of the vehicle. This makes the tyre’s footprint longer, reducing the pressure that the tyre exerts on the surface and spreading the vehicle’s weight over a larger surface. Reducing the tyres’ pressure will improve your traction but remember that it will decrease your ground clearance and can expose the tyres’ sidewall to damage.

It’s crucial that you get to know your vehicle inside and out. Get down on your knees and look underneath. What are the lowest points? What could get damaged? How high are the air intake and the breather for the gearbox and differentials? Keeps these in mind when driving off-road.

As slow as possible, as fast as necessary



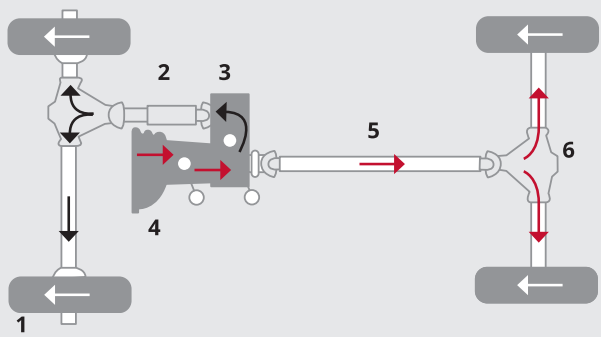
- 1. Engine
- 2. Gearbox
- 3. Prop Shaft
- 4. Differential (Rear Axle)

TWO-WHEEL DRIVE (4X2)

In a conventional rear-wheel drive vehicle the drive is transmitted from the gearbox to the rear prop shaft. This, in turn, sends drive to each wheel through the differential.

FOUR-WHEEL DRIVE (4X4)

Four-wheel drive vehicles are typically equipped with one of three drivetrain systems: part-time 4x4, full-time 4x4 or all-wheel drive.



- 1. Differential (Front Axle)
- 2. Front Prop
- 3. Transfer Gearbox
- 4. Gearbox
- 5. Rear Prop Shaft
- 6. Differential

PART-TIME FOUR-WHEEL DRIVE

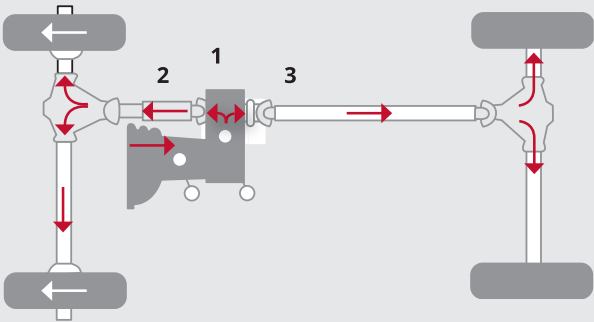
Selectable or part-time four-wheel drive systems allow the driver to choose between two-wheel drive or four-wheel drive, depending on the driving conditions. In 2WD mode, drive is sent to the rear axle only, but in 4WD mode, the drive is sent to both the front and rear axle via the transfer case.

FULL-TIME FOUR-WHEEL DRIVE

A vehicle equipped with full-time 4WD is permanently in 4x4 mode, as typically, found on sports utility vehicles (SUVs). Drive is sent to the front and rear prop shafts via a third or central differential.

In some 4x4 models, a central diff-lock is provided, which locks the front and rear differentials together to maximise traction on loose surfaces such as gravel roads and rough off-road terrain.

The central diff must not be locked when driving on hard surfaces or on the road. As the front wheels rotate at different speeds relative to the rear wheels when cornering, it’s essential to have the centre diff in the open position. This allows the drive to be sent to the wheels with least resistance.



ALL-WHEEL DRIVE

All-wheel drive (AWD) systems are typically used in so-called soft-roader or crossover vehicles which are primarily designed for on-road use. Although they don’t have a low-range transfer case, AWD vehicles feature a measure of off-road ability with increased ground clearance and the benefit of added traction for slippery conditions.

In normal on-road use the drive is primarily sent to either the front or rear wheels. When a significant difference between front and rear wheel speeds is detected, the system relies on a viscous coupling to automatically transfer drive to the wheels with more traction. In some models, the driver can switch from “4x4 Auto” mode to “4x4 Lock” which locks the centre differential to split the drive evenly between the front and rear axles.

Alternatively, the electronic systems are used in some vehicles to brake and reduce power to wheels with the least traction, thus directing more drive to wheels with greater grip. Unlike conventional mechanical 4x4 systems, electronic or traction-control based systems require a different driving approach in tricky off-road terrain. When reducing power to regain traction is suggested for proper 4x4s, electrical-based systems rely on the efficiency of the braking and traction control functions.



UK's largest and most
comprehensive range
of 4x4 and SUV tyres
and wheels

4SITE

4X4 TYRES

GENERAL TIRE

General Tire is a US tyre brand that is manufactured by Continental. Their 4x4 range of tyre products are a huge success across the world, particularly in the UK where they present excellent value for money. With a tyre to suit all terrains, General Tire 4x4 tyres are branded 'Grabber' to denote their off-road pedigree, but the latest high performance tyres are among the best you could fit to a 4x4 and SUV.

“Anywhere is possible” is the mission statement used by General Tire to convey all aspects of performance, handling and durability across the full spectrum of driving situations.



1 - Grabber GT (ORGI-1)

General Tire have always been well respected by the trade and consumers alike for producing a class-leading pure-road 4x4 tyre such as the superb GT. The end result of harnessing all the attributes from past products and using the latest technology to bring you these new high performance road tyres. These products are perfect for the SUV owner who wishes to enhance the performance of their vehicle and gain exceptional value for money. The GT offers fantastic levels of grip, road holding and steering response.



GENERAL TIRE

Your access
to any
adventure

Grabber AT³

Grabber AT3 (ORGI-6)

The all-terrain tyre developed to meet the needs of SUV, pick-up truck and off-road vehicle drivers who want a combination of exceptional off-road capabilities and confident on-road performance.

SA4x4 All-Terrain Tyre Test 2018 winner



1 - Experience exceptional traction

Traction ribs and multi-angled sipes achieve exceptional loose surface traction through gripping edges that interlock with the off-road surface. Open tread shoulder ensures efficient self-cleaning action for added traction in mud.

2 - Go off-road with confidence

Robust compound gives excellent cut and chip resistance. Reinforced tread blocks reduce block deformation. Both improve the tread life in rugged terrain conditions even in high-torque applications and deliver confident stability under all approved load conditions. Ultra high-strength steel belts ensure even footprint for confident stability.

3 - Enjoy maximum comfort

The uniform block geometry with low stiffness variation leads to an even material distribution and the optimised tread block orientation allows a smooth interaction with the surface and reduced belt excitation. This achieves a considerably comfortable and pleasant on-road drive in an all-terrain tyre line.

Features & Technologies

4 - Sidewall Lugs

Large sidewall lugs on the upper sidewall protect the tyre body from stones, rocks and debris.

5 - Deflection Ribs

A series of stacked deflection ribs protect the upper sidewall area against penetration by deflecting obstacles away from the tyre body.

6 - Rim Protection Ribs

Rim Protection Rib shields the tyre and wheel bead area from damage caused by curbstones and off-road obstacles.

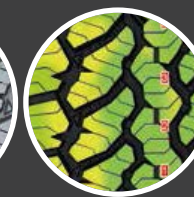
1 - TRACGEN
TECHNOLOGY



2 - DURAGEN
TECHNOLOGY



3- COMFORT
BALANCE
TECHNOLOGY



4 - SIDEWALL
LUGS



5 - DEFLECTION
RIBS



6- RIM
PROTECTION RIB



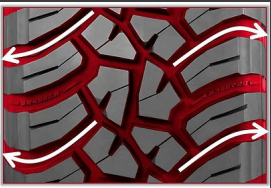


GENERAL TIRE

Grabber X3 (ORGI-10)
Our technology was born from competition, tested through mud and conquered rocks. Over three years in the making, with 16 prototype tread patterns and over 2 million test miles – this mud-terrain is ready to take on your terrain. General Tire’s new mud-terrain tyre line delivers outstanding off-road performance, coupled with strong street manners. Grabber X3 offers aggressive styling and is engineered for durability, with innovative performance features. Grabber X3 is available with racing-inspired red lettering on the sidewall in selected sizes.

GRABBER™ X3

CONQUER YOUR TERRAIN



EXTREME performance in MUD with engineered tread features
Enjoy extreme off-road manoeuvres with an aggressive and open pattern design that achieve high traction levels in mud, dirt, sand and gravel. Evacuation channels ensure quick and efficient self-cleaning action.



EXTREME performance in DIRT with superior grip
Experience superior loose surface grip with block chamfers & traction notches that provide additional biting edges and open the pattern. Stone bumpers that protect the groove bottom and minimise stone drilling improve tread life.



EXTREME performance on ROCK with breakthrough cut resistance
Conquer with confidence: multi-angle gripping edges arranged for grip in every direction and large sidewall lugs and deflection ribs that protect the tyre body. Master extreme off-roading with excellent grip and strong sidewall protection.



SHOULDER SCOOPS
Indented blocks alternating on the shoulder to deliver additional grip on complex surfaces. This provides all surface traction.



QUIET STREET RIDE
Each individual pitch length help to minimise tread generated noise on the street. Remarkably quiet and comfortable for the street and aggressively talented for off-road terrain.



STONE BUMPERS
Bumpers help release stones and debris from the large deep grooves, protects the groove bottom and minimises stone drilling. Added gauge improves puncture resistance.



SIDEWALL PROTECTION
A series of deflection ribs to protect the upper sidewall area. Objects are deflected away to prevent penetration into the sidewall.



DURAGEN™ TECHNOLOGY
Three-ply construction on all sizes* provides race-proved durability and puncture resistance. Robust compound gives excellent cut and chip resistance. Ultra high-strength steel belts ensures even footprint for confident stability.

Land Rover Owner International
2018 Winner versus BFGoodrich M/T KM2



GENERAL TIRE


4 - **Grabber AT2 (ORGI-6)**

An extreme traction tyre, with an aggressive all-terrain tread design, these tyres are perfect for any off-road situation. Featuring additional traction ridges, these tyres will pull you through the toughest of terrains. The wide footprint of the tyre provides maximum traction while reducing uneven tread wear to extend the tyre’s life.

5 - **Snow Grabber PLUS (ORGI-2)**

The new non-studded winter tyre line specifically designed for SUV / 4x4 vehicles takes you anywhere, even in the worst wintry conditions. Innovative traction features offer excellent grip on snow for an exceptional wintertime experience.

6 - **Grabber A/S 365 (ORGI-2)**

Grab the next mile and ride with confidence. General Tire’s new SUV All Season tyre combines SUV specific toughness with reliable performance in all weather conditions. 



The red-letter Grabber X3 tyres are a hallmark of the General Tire brand. With all the X3 features, the racing-inspired MT will be available in a developing range.

PATTERN & SIZES GENERAL TIRE

F W E D							
GRABBER GT							
	195/80 R15	96H		E	C	2	71
	205/70 R15	96H		E	C	2	71
	205/80 R16	104T	XL	E	C	2	72
	215/55 R18	99V	XL	C	B	2	72
	215/60 R17	96H		E	C	2	71
	215/60 R17	96V		E	B	2	71
	215/65 R16	98H		E	C	2	71
	215/65 R16	102H	XL	E	C	2	72
	215/65 R16	98V		E	C	2	71
	215/70 R16	100H		E	C	2	71
	225/55 R17	97V		E	C	2	71
	225/55 R18	98V		E	C	2	71
	225/55 R19	103V	XL	E	C	2	72
	225/60 R17	99V		E	C	2	71
	225/60 R18	100H		E	C	2	71
	225/65 R17	102H		E	C	2	71
	225/65 R17	102V		E	C	2	71
	225/70 R16	103H		E	C	2	71
	235/50 R18	97V		E	C	2	71
	235/50 R19	99V		E	B	2	71
	235/55 R17	99H		E	C	2	71
	235/55 R17	99V		E	C	2	71
	235/55 R18	100H		E	C	2	71
	235/55 R18	100V		E	C	2	71
	235/55 R19	105W	XL	E	C	2	72
	235/60 R16	100V		E	C	2	71
	235/60 R17	102V		E	B	2	71
	235/60 R18	107W	XL	E	C	2	72
	235/65 R17	108V	XL	E	C	2	72
	235/70 R16	106H		E	C	2	71
	235/75 R15	109T	XL	E	C	2	72
	245/65 R17	111V	XL	E	C	2	72
	245/70 R16	107H	-	E	C	2	71
	255/45 R20	105W	XL	E	C	2	73

F W E D							
	255/50 R19	107Y	XL	E	C	2	73
	255/50 R20	109Y	XL	C	B	2	73
	255/55 R18	109Y	XL	E	C	2	73
	255/55 R19	111V	XL	E	C	2	73
	255/60 R17	106V		E	C	2	72
	255/60 R18	112V	XL	E	C	2	73
	255/65 R16	109H		E	C	2	72
	255/65 R17	110H		E	C	2	72
	255/70 R16	111H		E	C	2	72
	265/45 R20	108Y	XL	E	C	2	73
	265/50 R19	110Y	XL	E	C	2	73
	265/65 R17	112H		E	C	2	72
	265/70 R16	112H		E	C	2	72
	275/40 R20	106Y	XL	E	C	2	73
	275/40 R22	108Y	XL	C	B	2	73
	275/45 R19	108Y	XL	E	C	2	73
	275/45 R20	110Y	XL	E	C	2	73
	275/55 R17	109V	-	E	C	2	72
	285/35 R23	107Y	XL	C	B	2	75
	285/45 R19	111W	XL	E	C	2	75
	295/35 R21	107Y	XL	E	C	2	75
GRABBER AT3							
	195/80 R15	96T		F	E	2	72
	205/70 R15	96T		F	E	2	72
BSW	205/70 R15	106/104S		F	B	2	75
	205/75 R15	97T		F	E	2	72
	205/80 R16	104T	XL	E	E	2	72
	205/82 R16	110/108S		F	B	2	75
	215/60 R17	96H		F	E	2	72
	215/70 R16	100T		F	E	2	72
	215/75 R15	100T		F	E	2	72
	225/65 R17	102H		F	E	2	72
	225/70 R15	100T		F	E	2	72
	225/70 R16	103T		F	E	2	72
	225/70 R17	108T	XL	E	E	2	72

F W E D							
	225/75 R15	102T		F	E	2	72
	225/75 R16	108H	XL	E	E	2	72
	235/55 R17	99H		F	E	2	72
	235/55 R18	104H	XL	F	E	2	72
	235/55 R19	105H	XL	E	E	2	72
	235/60 R16	100H		F	E	2	72
	235/60 R18	107H	XL	E	E	2	72
	235/65 R17	108H	XL	F	E	2	72
	235/65 R17	108V	XL	E	C	2	72
	235/70 R17	111H	XL	E	E	2	72
	245/65 R17	111H	XL	E	E	2	72
	245/70 R16	111H	XL	E	E	2	72
	245/70 R17	114T	XL	E	E	2	72
	255/50 R19	107H	XL	E	E	2	73
	255/55 R18	109H	XL	F	E	2	73
	255/55 R19	111H	XL	E	E	2	73
	255/55 R20	110H	XL	E	E	2	73
	255/60 R18	112H	XL	E	E	2	73
	255/65 R16	109H		F	E	2	73
	255/70 R15	112T	XL	E	E	2	73
	265/60 R18	110H		E	E	2	73
	265/65 R17	112H		F	E	2	73
	265/65 R18	114T		F	E	2	73
	265/70 R15	112T		E	E	2	73
	265/70 R16	112H		F	E	2	73
	265/70 R17	115T		E	E	2	73
	275/40 R20	106H	XL	F	E	2	73
	275/40 R20	106V	XL	E	C	2	73
	275/45 R20	110H	XL	E	E	2	73
	275/45 R20	110V	XL	E	C	2	73
	275/55 R20	117H	XL	E	E	2	73
	275/60 R20	115H		F	E	2	73
	285/60 R18	116H		E	E	2	75
OWL	31X10.50R15	109S		F	B	2	75
	LT215/65 R16	103/100S	LT	F	B	2	75

F W E D							
	LT215/80 R15	112/109S	LT	F	B	2	75
BSW	LT225/70 R17	115/112S	LT	F	B	2	75
OWL	LT225/75 R16	115/112S	LT	F	B	2	75
OWL	LT235/70 R16	110/107S	LT	F	B	2	75
OWL	LT235/75 R15	110/107S	LT	F	B	2	75
OWL	LT235/85 R16	120/116S	LT	F	B	2	75
OWL	LT245/70 R16	113/110S	LT	F	B	2	75
	LT245/75 R15	113/110S	LT	F	B	2	75
OWL	LT245/75 R16	120/116S	LT	F	B	2	75
	LT255/60 R18	112/109S	LT	F	B	2	75
	LT255/65 R17	114/110S	LT	F	B	2	75
OWL	LT255/70 R16	120/117S	LT	F	B	2	75
	LT265/60 R18	119/116S	LT	F	B	2	75
OWL	LT265/65 R17	120/117S	LT	E	B	2	75
OWL	LT265/65 R18	117/114S	LT	O	O	O	O
OWL	LT265/70 R16	121/118S	LT	E	B	2	75
OWL	LT265/70 R17	121/118S	LT	E	B	2	75
BSW	LT285/60 R18	118/115S	LT	F	B	2	75
BSW	LT285/65 R17	121/118S	LT	E	B	2	75
GRABBER X3							
BSW	205/82 R16	110/108Q				POR	
BSW	255/55 R19	111Q	XL			POR	
BSW	30X9.50R15	104Q				POR	
BSW	31X10.50R15	109Q				POR	
BSW	33X12.50R15	108Q				POR	
BSW	33X12.50R15	108Q				POR	
BSW	33X12.50R17	114Q				POR	
BSW	33X12.50R17	114Q				POR	
BSW	33X12.50R18	118Q				POR	
BSW	33X12.50R20	114Q				POR	
BSW	35X12.50R15	113Q				POR	
BSW	35X12.50R17	121Q				POR	
BSW	35X12.50R20	121Q				POR	
BSW	37X12.50R17	116Q				POR	
BSW	LT215/75 R15	106/103Q	LT			POR	

F W E D							
BSW	LT225/75 R16	115/112Q	LT			POR	
BSW	LT235/75 R15	110/107Q	LT			POR	
BSW	LT235/85 R16	120/116Q	LT			POR	
BSW	LT245/70 R17	119/116Q	LT			POR	
BSW	LT245/75 R16	120/116Q	LT			POR	
BSW	LT255/75 R17	111/108Q	LT			POR	
BSW	LT265/60 R18	119/116Q	LT			POR	
BSW	LT265/70 R16	121/118Q	LT			POR	
BSW	LT265/70 R17	121/118Q	LT			POR	
BSW	LT265/75 R16	119/116Q	LT			POR	
BSW	LT285/70 R17	121/118Q	LT			POR	
BSW	LT285/75 R16	116/113Q	LT			POR	
BSW	LT295/70 R17	121/118Q	LT			POR	
BSW	LT305/55 R20	121/118Q	LT			POR	
GRABBER X3 - SMOOTH RED LETTERS							
SRL	33X10.50R15	114Q				POR	
SRL	33X12.50R17	114Q				POR	
SRL	33X12.50R18	118Q				POR	
SRL	35X12.50R17	121Q				POR	
SRL	35X12.50R20	121Q				POR	
SRL	LT265/70 R17	121/118Q	LT			POR	
SRL	LT265/75 R16	112/109Q	LT			POR	
SRL	LT285/70 R17	121/118Q	LT			POR	
SRL	LT295/70 R17	121/118Q	LT			POR	
SRL	LT305/55 R20	121/118Q	LT			POR	
GRABBER AT2							
BSW	LT265/75 R16	121/118R		E	B	2	75
BSW	LT285/75 R16	121/118R		E	B	2	75
SNOW GRABBER PLUS							
	205/70 R15	96T		E	C	2	72
	215/60 R17	96H		F	C	2	72
	215/65 R16	98H		E	C	2	72
	215/70 R16	100H		E	C	2	72
	225/55 R18	102V	XL				
	225/60 R17	103H	XL	E	C	2	72

				F	W	E	D
	225/65 R17	106H	XL	E	C	2	72
	225/70 R16	103H		E	C	2	72
	225/75 R16	104T		F	C	2	72
	235/55 R17	103V	XL	E	C	2	72
	235/55 R18	104H	XL	E	C	2	72
	235/55 R19	105V	XL	E	C	2	72
	235/60 R17	106H	XL	E	C	2	72
	235/60 R18	107V	XL	C	C	2	72
	235/60 R18	107H	XL	E	C	2	72
	235/65 R17	108H	XL	E	C	2	72
	235/70 R16	106T		E	C	2	72
	235/75 R15	109T	XL	E	C	2	72
	245/70 R16	107T		E	C	2	72
	255/45 R20	105V	XL				
	255/50 R19	107V	XL	E	C	2	73
	255/55 R18	109H	XL	E	C	2	73
	255/55 R18	109V	XL	E	C	2	73
	255/55 R19	111V	XL	E	C	2	73
	265/60 R18	114H	XL	E	C	2	73
	265/70 R16	112H		E	C	2	73
	275/40 R20	106V	XL	E	C	2	73
	275/45 R20	110V	XL	E	C	2	73
GRABBER A/S 365							
	215/60 R17	96H		F	C	2	72
	225/65 R17	102V		E	C	2	72
	235/55 R19	105W	XL	0	0	0	0
	235/60 R18	107V	XL	E	C	2	72
	235/65 R17	108V	XL	E	C	2	72
	255/50 R19	107V	XL	E	C	2	73
	255/55 R18	109V	XL	0	0	0	0

BF GOODRICH

BF Goodrich tyres are widely regarded as one of the best 4x4 tyres where there is moderate to extreme off-road requirements. BF Goodrich are very well known for their durability, strength and mileage potential. They have a cult status in the UK amongst 4x4 enthusiasts and are at the forefront of 4x4 motorsport, numerous Paris-Dakar rally winners since 1999 and having secured over 20 victories in the famous Baja 1000 and over 18 victories in the Baja 500 events.



1 - Urban Terrain T/A (ORGI-2)

The perfect tyre for your SUV. The Urban Terrain offers an asymmetric all season tread pattern which is suitable all year around. This is a very tough SUV tyre with its cord casing being 20% stronger and the tread pattern has sipes and cross grooves which ensures great traction in the snow. The tyre also carries the 3 peak mountain snowflake symbol.

2 - All-Terrain T/A K02 (ORGI-6)

The All-Terrain T/A K02 ("K02" for Key benefit on and off road with 2 identifying it as BF Goodrich's 2nd generation KO tyre) is an on/off-road all-terrain light truck tyre developed to meet the needs of Jeep, pick-up trucks and sports utility vehicle drivers who want confidence and control on and off-road. The All-Terrain K02 was designed to deliver go-anywhere traction along with outstanding durability, great wear and all year round traction, even in snow.

3 - Mud Terrain T/A KM3 (ORGI-10)

The new Mud Terrain T/A KM3 has been designed to power through mud and loose soil with BFGoodrich's Terrain-Attack tread design. Its massive tread blocks are designed to deliver incredible grip from any angle of approach, the and mud-phobic bars release compacted mud for continued traction. The compound enhances grip on rock and slick surfaces and the CoreGard Max Technology uses a thick sidewall shield and the specialised compound helps guard against sharp objects.



For further information on patterns and sizes please contact the 4Site 4x4 team on: 0870 112 9401

PATTERN & SIZES BF GOODRICH

						F	W	E	D
URBAN TERRIAN T/A									
BSW	205/70 R15	96H				E	C	2	70
BSW	215/70 R16	100H				E	C	2	70
BSW	215/65 R16	98H				E	C	2	70
BSW	215/60 R17	96H				C	C	2	70
BSW	225/70 R16	103H				E	C	2	70
BSW	225/65 R17	102H				C	C	2	70
BSW	235/75 R15	109H	XL			C	C	2	70
BSW	235/70 R16	106H				C	C	2	70
BSW	235/65 R17	108V	XL			C	C	2	70
BSW	235/60 R16	104H	XL			C	C	2	72
BSW	235/60 R18	107V	XL			C	C	2	72
BSW	235/55 R17	99V				C	C	2	72
BSW	235/55 R18	100V				C	C	2	72
BSW	235/50 R18	97V				E	C	2	72
BSW	245/70 R16	111H	XL			C	C	2	72
BSW	255/65 R16	113H	XL			C	C	2	72
BSW	255/55 R18	109V	XL			C	C	2	72
BSW	265/70 R16	112H				C	C	2	72
ALL TERRAIN T/A KO2									
RWL	LT30X9.50 R15	104S		LT	F	B	2	75	
RWL	LT33X10.50 R15	114R		LT	F	B	2	75	
RWL	LT31X10.50 R15	109S		LT	E	B	2	75	
RWL	LT32X11.50 R15	113R		LT	E	B	2	75	
RWL	LT37X12.50 R17	116R		LT				TBC	
RWL	LT35X12.50 R18	118R		LT	F	B	2	75	
RWL	LT33X12.50 R15	108R		LT	F	B	2	75	
RWL	LT35X12.50 R15	113Q		LT	F	B	2	75	
RBL	LT215/75 R15	100S		LT	F	B	2	74	
RBL	LT215/70 R16	100R		LT	F	B	2	74	
RBL	LT215/65 R16	103S		LT	F	B	2	74	
RWL	LT225/75 R16	115S		LT	F	B	2	74	
RWL	LT225/70 R16	102R		LT	F	B	2	74	
RBL	LT225/65 R17	107S		LT	F	B	2	74	
RWL	LT235/85 R16	120S		LT	F	B	2	74	
RWL	LT235/75 R15	104S		LT	F	B	2	75	
RWL	LT235/70 R16	104S		LT	F	B	2	74	
RWL	LT245/75 R16	120S		LT	F	B	2	74	

BSW: Black Sidewall Letters | RWL: Raised White Letters
POR: Professional Off Road | NHS: Not for Highway Service
LT: Light Truck | RBL: Raised Black Letters

		F		W	E	D
RWL	LT245/75 R17	121S		LT	F	B 2 74
RWL	LT245/70 R16	113S		LT	F	B 2 74
RWL	LT245/70 R17	119S		LT	F	B 2 74
RWL	LT245/65 R17	111S		LT	F	B 2 75
RBL	LT255/75 R17	111S		LT	F	B 2 74
RWL	LT255/70 R16	120S		LT	F	B 2 74
RBL	LT255/70 R18	117S		LT	F	B 2 74
RWL	LT255/65 R17	114S		LT	F	B 2 74
RBL	LT255/55 R18	109R		LT	F	B 2 74
RWL	LT265/75 R16	119R		LT	F	B 2 74
RWL	LT265/70 R16	121S		LT	E	B 2 74
RWL	LT265/70 R17	121S		LT	F	B 2 74
RWL	LT265/65 R17	120S		LT	F	B 2 74
RWL	LT265/65 R18	117R		LT	F	B 2 74
RBL	LT265/60 R18	119S		LT	F	B 2 74
RBL	LT265/60 R20	121S		LT	F	B 2 74
RWL	LT275/70 R16	119S		LT	E	B 2 74
RWL	LT275/65 R17	121S		LT	F	B 2 74
RBL	LT275/60 R20	119S		LT	F	B 2 75
RBL	LT275/55 R20	115S		LT	F	B 2 75
RWL	LT285/75 R16	116R		LT	F	B 2 75
RWL	LT285/70 R17	121R		LT	F	B 2 75
RBL	LT285/65 R18	121R		LT		TBC
RWL	LT285/60 R18	118S		LT	E	B 2 75
RBL	LT285/55 R20	117T		LT	F	B 2 75
RBL	LT315/70 R17	121S		LT	E	B 2 75
RBL	LT325/60 R20	121S		LT		TBC
MUD TERRAIN T/A KM3						
BSW	LT7.50 R16	116Q		LT		POR
BSW	LT30X9.50 R15	104Q		LT		POR
BSW	28X10.00 R14	77N	NHS			POR
BSW	30X10.00 R14	81N	NHS			POR
BSW	32X10.00 R14	86N	NHS			POR
BSW	30X10.00 R15	81N	NHS			POR
BSW	32X10.00 R15	85N	NHS			POR
BSW	33X10.50 R15LT	114Q		LT		POR
BSW	31X10.50 R15LT	109Q		LT		POR
BSW	32X11.50 R15LT	113Q		LT		POR

		F		W	E	D
BSW	35X12.50 R15LT	113Q		LT		POR
BSW	37X12.50 R17LT	116Q		LT		POR
BSW	33X12.50 R15LT	108Q		LT		POR
BSW	33X12.50 R17LT	120Q		LT		POR
BSW	37X12.50 R18LT	115Q		LT		POR
BSW	35X12.50 R17LT	121Q		LT		POR
BSW	35X12.50 R20LT	121Q		LT		POR
BSW	39X13.50 R17LT	121Q		LT		POR
BSW	LT205/80 R16	111Q		LT		POR
BSW	LT215/75 R15	100Q		LT		POR
BSW	LT225/75 R16	115Q		LT		POR
BSW	LT235/85 R16	120Q		LT		POR
BSW	LT235/75 R15	110Q		LT		POR
BSW	LT235/70 R16	110Q		LT		POR
BSW	LT245/75 R16	120Q		LT		POR
BSW	LT245/75 R17	121Q		LT		POR
BSW	LT245/70 R16	113Q		LT		POR
BSW	LT245/70 R17	119Q		LT		POR
BSW	LT245/65 R17	111Q		LT		POR
BSW	LT255/85 R16	119Q		LT		POR
BSW	LT255/75 R17	111Q		LT		POR
BSW	LT255/70 R16	120Q		LT		POR
BSW	LT255/65 R17	114Q		LT		POR
BSW	LT265/75 R16	119Q		LT		POR
BSW	LT265/70 R16	121Q		LT		POR
BSW	LT265/70 R17	121Q		LT		POR
BSW	LT265/65 R17	120Q		LT		POR
BSW	LT265/60 R18	119Q		LT		POR
BSW	LT285/75 R16	116Q		LT		POR
BSW	LT285/75 R17	121Q		LT		POR
BSW	LT285/70 R17	121Q		LT		POR
BSW	LT305/70 R16	118Q		LT		POR
BSW	LT305/60 R18	121Q		LT		POR
BSW	LT305/55 R20	121Q		LT		POR
BSW	LT315/75 R16	121Q		LT		POR
BSW	LT315/70 R17	121Q		LT		POR



FALKEN

The FALKEN brand was founded in 1983 in its home country of Japan, initially as a flagship brand of high-performance radial tyres. Its founders deliberately chose a name that expresses dynamism, performance and natural elegance. Now, over three decades later, FALKEN is a high-profile independent brand focusing on quality products and continuously driving progress by using professional motorsports as a testing and development arena.



For further information on patterns and sizes please contact the 4Site 4x4 team on: 0870 112 9401



1 - **AZENIS FK510 SUV (ORGI-1)**

Our latest generation ultra high - performance FK510 SUV delivers excellent safety, outstanding dynamics and enhanced fuel economy. The innovative compound mix and advanced design of the AZENIS FK510 SUV is derived from our experience from thousands of kilometres on racetracks and test circuits - all part of creating our latest flagship ultra high - performance SUV tyre.

2 - **LANDAIR LA/AT T110 (ORGI-2)**

An extremely capable all-terrain tyre for SUVs, 4x4s and pickup trucks. The symmetrical, open tread design, with durable tread blocks, serve to give the tyre impressive levels of traction and grip on all manner of terrains. With this Falken 4x4 tyre, customers can expect a proven, high-quality, on/off-road performer at an affordable price.

3 - **WILDPEAK A/T AT01 (ORGI-4)**

An excellent performer in any terrain. The WILDPEAK delivers brilliant performance in wet or dry conditions, and is extremely competent in off-road conditions, making it the ideal tyre choice for the all-purpose 4x4 or SUV.

4 - **WILDPEAK A/T AT3WA (ORGI-4)**

The new WILDPEAK A/T generation, AT3WA, is engineered for any adventure, at any time and in any weather. The AT3WA combines durable off-road ability and rugged terrain driving without compromises on the road. It represents a true ALL TERRAIN performance tyre.

5 - **WILDPEAK MT (ORGI-10)**

The tyre boasts a 3-ply Duraspec sidewall which ensures the tyre is able to absorb serious impact. Aggressive shoulder blocks extend down the sidewall which allows for additional traction in deep ruts. An optimised variable three-pitch tread pattern provides exceptional road handling and low road noise, resulting in this tyre being one of the quietest available in this category. Heat diffuser technology prevents temperature build up in the sidewall especially at low pressures. This tyre will become a popular mud-terrain choice for the enthusiast and for working vehicles.

6 - **EUROALL SEASON AS210 SUV (ORGI-2)**

Falken's all-new EUROALL SEASON AS210 is an outstandingly versatile choice when it comes to year-round usability, comfort, safety and performance..

7 - **EUROWINTER HS01 (ORGI-2)**

The latest generation of Falken's venerable EUROWINTER product line: The HS01 features Miura-Ori 3D sipe technology, a 4D-Nano Design technology enhanced compounds and stiffer tread blocks, which combine to offer staggering levels of performance in winter conditions, as well as outstanding wet performance and comfort.



PATTERN & SIZES FALKEN

F W E D									
AZENIS FK510 SUV									
	215/50 R18	92W			E	A	2	70	
	215/55 R18	99W	XL		C	A	2	70	
	225/50 R18	99W	XL		C	A	2	70	
	225/55 R18	102W	XL		C	A	2	70	
	225/55 R19	99W			C	A	2	70	
MFS	235/50 R18	101Y	XL		C	A	2	70	
	235/50 R19	103W	XL		C	A	2	70	
	235/55 R17	103W	XL		C	A	2	70	
	235/55 R18	104Y	XL		C	A	2	70	
	235/55 R19	105Y	XL		C	A	2	70	
	235/60 R17	102W			C	A	2	69	
	235/60 R18	103W	NO		C	A	2	71	
	235/60 R18	107W	XL		C	A	2	70	
	235/65 R17	108W	XL		C	A	2	70	
	235/65 R18	106W			C	A	2	70	
	255/45 R20	105W	XL		C	A	2	70	
	255/45 ZR20	105Y	XL		C	A	2	70	
	255/50 R18	106W	XL		C	A	1	70	
MFS	255/50 R19	107Y	XL		C	A	1	70	
MFS	255/50 R20	109Y	XL					TBC	
	255/55 R18	105W	NO		C	A	2	72	
	255/55 R18	109W	XL		C	A	1	70	
	255/55 R19	111W	XL		C	A	1	70	
MFS	265/35 R22	102Y	XL					TBC	
	265/40 R21	105Y	XL		C	A	1	70	
MFS	265/45 R20	108Y	XL		C	A	1	70	
MFS	265/50 R19	110Y	XL		C	A	1	70	
	265/55 R19	109Y			C	A	2	70	
MFS	275/40 R20	106Y	XL		C	A	1	70	
MFS	275/45 R20	110W	XL		C	A	1	70	
	275/50 R20	113Y	XL		C	A	1	70	
MFS	285/35 R21	105Y	XL					TBC	
MFS	285/35 R22	106Y	XL					TBC	
	285/40 R21	109Y	XL		C	A	1	70	
	285/45 R20	112Y	XL		C	A	1	70	
	285/45 ZR21	113Y	XL		C	A	1	70	
MFS	295/30 R22	103Y	XL		E	A	1	70	
MFS	295/35 R21	107Y	XL		C	A	1	70	
MFS	295/40 R20	110Y	XL		C	A	1	70	
MFS	295/45 R20	114W	XL		C	A	1	70	
MFS	315/35 R20	110Y	XL		C	A	1	70	
LANDAIR LA/AT T110									
	195/80 R15	96H			M+S	E	E	2	70

F W E D									
	205/70 R15	95H			M+S	E	E	2	70
	215/65 R16	98H			M+S	E	E	2	70
	215/70 R16	99H			M+S	E	E	2	70
	215/80 R15	101S			M+S	E	E	2	70
	215/80 R16	103S			M+S	E	E	2	70
	235/60 R16	100H			M+S	E	E	2	70
	235/70 R16	106H			M+S	E	E	2	70
	245/70 R16	107H			M+S	E	E	2	71
	265/70 R15	110H			M+S	E	E	2	71
	265/70 R16	112H			M+S	E	E	2	71
	275/70 R16	114H			M+S	E	E	2	71
	LT235/75 R15	104/101Q			M+S	F	E	2	73
	LT30X9.50 R15	104Q			M+S	E	E	2	72
	LT31X10.5 R15	109Q			M+S	E	E	2	73
WILDPEAK H/T01									
	225/60R17	99T			M+S	E	E	2	69
WILDPEAK A/T AT01									
	205/80 R16	104T	XL		M+S	E	F	2	71
	205 R16C	110/108R			M+S	E	C	2	73
	215/60 R17	96H			M+S	E	E	2	71
	235/70 R16	106T			M+S	E	E	2	71
	245/65 R17	111H	XL		M+S	E	C	2	71
	245/70 R16	107T			M+S	E	E	2	71
	255/65 R16	109T			M+S	E	E	2	71
	265/65 R17	112H			M+S	E	E	2	71
	265/70 R15	112T			M+S	E	E	2	72
	265/70 R16	112T			M+S	E	E	2	72
	275/65 R17	115H			M+S	E	E	2	71
	275/70 R16	114T			M+S	E	E	2	72
	285/60 R18	116H	XL		M+S	C	E	2	73
	LT215/75 R15	100/97S			M+S	E	C	2	72
	LT235/75 R15	104/101S			M+S	E	C	2	72
WILDPEAK A/T AT3WA									
	215/65 R16	98H							TBC
	225/65 R17	102H							TBC
	235/55 R19	105H	XL						TBC
	235/60 R18	107H	XL						TBC
	235/65 R17	108H	XL						TBC
	245/65 R17	111H	XL						TBC
	245/70 R16	111T							TBC
	245/70 R17	114T							TBC
	255/55 R18	109H	XL						TBC
	255/55 R19	111H	XL						TBC
	255/60 R18	112H	XL						TBC

F W E D									
	255/65 R17	114H	XL						TBC
	255/70 R15	108S							TBC
	265/60 R18	110H			E	C	2	73	
	265/65 R17	112H							TBC
	265/70 R17	115S							TBC
	LT 225/75 R16	115/112S							TBC
	LT 235/85 R16	120/116Q							TBC
	LT 245/75 R16	120/116Q							TBC
	LT 265/75 R16	119/116R							TBC
	LT 275/65R 18	113/110S			M+S	E	B	2	72
	LT 31X10.5 R15	109Q							TBC
WILD PEAK MT									
	LT 235/85 R16	120Q							POR
	LT 245/75 R16	120Q							POR
	LT 265/70 R17	121Q							POR
	LT 285/70 R17	121Q							POR
	LT 31X10.5 R15	109Q							POR
	LT 33X12.5 R15	108Q							POR
	LT 33X12.5 R17	120Q							POR
	LT 35X12.5 R17	121Q							POR
EUROALL SEASON AS210 SUV									
	225/45 R19	96V	XL		E	B	2	70	
	235/50 R18	101V	XL						TBC
	225/55 R17	101V	XL						TBC
	235/55 R17	103V	XL						TBC
	215/55 R18	99V	XL		C	B	2	70	
	225/55 R18	102V	XL		C	B	2	70	
	235/55 R18	104V	XL		C	B	2	70	
	235/55 R19	105V	XL		C	B	2	70	
	205/60 R16	96V	XL		C	B	2	70	
	215/60 R16	99V	XL		C	B	2	70	
	215/60 R17	100V	XL		C	B	2	70	
	225/60 R17	103V	XL		C	B	2	70	
	235/60 R18	107H	XL						TBC
	265/60 R18	110V			E	B	2	72	
	215/65 R16	98H			C	B	2	71	
	215/65 R17	103V	XL		C	B	2	70	
	225/65 R17	106V	XL		C	B	2	70	
	235/65 R17	108V	XL						TBC
	215/70 R16	100H			C	C	2	71	
EUROWINTER HS01SUV									
	195/70R16	94H			M+S	E	B	2	71
	215/55R18	99V	XL		M+S	E	B	2	72
	215/60R17	100V	XL		M+S	E	B	2	72

F W E D									
	215/65 R16	98H			M+S	C	B	2	71
	215/65 R17	99H			M+S	C	B	2	71
	215/70 R16	100H			M+S	E	B	2	71
	225/55 R18	102V	XL		M+S	E	B	2	72
	225/55 R19	99H			M+S	F	B	2	71
	225/60 R17	103V	XL		M+S	E	B	2	72
	225/60 R18	104V	XL		M+S	E	B	2	72
	225/65 R17	106H	XL		M+S	E	B	2	72
	225/70 R16	103H			M+S	E	B	2	71
MFS	235/50 R19	103V	XL		M+S	E	B	2	72
	235/55 R18	104V	XL		M+S	E	B	2	72
	235/60 R17	102V			M+S	E	B	2	71

F W E D									
	235/60 R18	107V	XL		M+S	E	B	2	72
	235/65 R17	108V	XL		M+S	C	B	2	72
	235/70 R16	109H	XL		M+S	E	B	2	72
	235/70 R17	109H	XL		M+S	C	B	2	72
MFS	245/45 R20	103V	XL		M+S	E	B	2	72
	245/65 R17	111V	XL		M+S	C	B	2	72
	245/70 R16	111H	XL		M+S	C	B	2	72
MFS	255/45 R20	105V	XL		M+S	E	B	2	73
MFS	255/50 R19	107V	XL		M+S	E	B	2	73
	255/55 R18	109V	XL		M+S	E	B	2	73
	255/55 R19	111V	XL		M+S	E	B	2	73
	255/60 R18	112V	XL		M+S	C	B	2	72

F W E D									
	255/65 R17	114H	XL		M+S	C	B	2	72
MFS	265/50 R19	110V	XL		M+S	E	B	2	73
	265/60 R18	114V	XL		M+S	C	B	2	72
MFS	275/40 R20	106V	XL		M+S	F	B	2	73
MFS	275/45 R19	108V	XL		M+S	E	B	2	73
MFS	275/45 R20	110V	XL		M+S	E	B	2	73
MFS	285/45 R19	111V	XL		M+S	E	B	2	73
MFS	295/35 R21	107W	XL		M+S	E	B	2	73
MFS	295/40 R20	110V	XL		M+S	E	B	2	74
MFS	295/45 R20	114V	XL		M+S	E	B	2	74

OPTIMISED TREAD PATTERN



PIRELLI

Pirelli was founded in Milan in 1872 and today stands as a global brand known for its cutting edge technology, high-end production excellence and passion for innovation that draws heavily on its Italian roots.

With around 30,000 employees and a yearly turnover of more than €5.3 billion, Pirelli is a major player in the tyre industry and the only global player focused solely on the Consumer tyre market, which includes tyres for cars, SUVs, motorcycles and bicycles. Pirelli has always been at the heart of performance driving and when it comes to 4x4 driving, the need for true performance has never been greater.



1 - **Scorpion™ Verde (ORGI-1)**

The world’s first “Green Performance” summer tyre for SUVs and Crossover vehicles. The Scorpion Verde™ has been created to take full advantage of Pirelli’s latest materials, structures and tread patterns in order to guarantee savings, respect for the environment, comfort and safety on all road surfaces.

2 - **Scorpion™ Zero (ORGI-2)**

Engineered for high sporty performance on road and safe driving in off-road conditions. The attractive tread pattern makes it the ideal tyre to combine with personalised wheels for a striking aesthetic effect.

3 - **Scorpion™ STR (ORGI-2)**

The Scorpion STR provides excellent sports handling for light truck and SUVs. Aggressive traction characteristics, and greater ride comfort and handling.

4 - **Scorpion™ A/T+ (ORGI-4)**

Scorpion All Terrain Plus is the new SUV all terrain product with an aggressive off-road look. It is suitable for both off-road and on-road usage (60% off-road – 40% on-road).

5 - **Scorpion™ Zero All Season (ORGI-3)**

The new Scorpion Zero All Season, developed for OE application, has been chosen by the best car makers in order to equip their latest SUVs. This product has been developed to maximise performance during all seasons, in every driving condition, also on light snow-covered roads.

6 - **Scorpion™ Verde All Season (ORGI-4)**

Ideal choice for Crossovers and SUVs. It is conceived for drivers who look for higher mileage and light off-road performances, without giving up comfort and safety on all road surfaces and in every condition.

7 - **Scorpion™ Ice & Snow (ORGI-4)**

Winter tyres designed for fast, luxury modern SUVs, boasting outstanding performance in winter road conditions. Safety and comfort combine to make Scorpion™ Ice & Snow a tyre that will enhance a vehicle, making it ideal for even the most aggressive style conversions.

8 - **Scorpion™ Winter (ORGI-3)**

Scorpion™ Winter has been designed to fit modern SUVs and Cross-overs, with a special focus on the high-end segment. The goal is no fear in down-hill braking and cornering in winter road conditions, whilst maintaining total control.



PATTERN & SIZES PIRELLI

			F	W	E	D
	SCORPION VERDE					
	215/55 R18	99V	XL		C B	2 71
	215/60 R17	96H			C B	2 70
	215/65 R16	102H	XL		C B	2 71
	215/65 R17	99V			B C	2 70
	215/70 R16	100H			C B	2 71
	225/45 R19	96W	XL		C B	2 71
	225/55 R18	98V			C B	2 71
	225/55 R19	99V			C B	2 71
	225/60 R18	100H			C B	2 71
	225/65 R17	102H			C B	2 71
	225/70 R16	103H			C B	2 71
SI	235/45 R20	100V	XL		B B	2 70
R-F	235/50 R18	97V		(MOE)	E B	2 71
	235/50 R18	97V		(AO)	C B	2 71
	235/50 R18	97Y		(RO1)	C B	2 71
SI	235/50 R19	99V			B B	2 70
	235/50 R20	100W		(MO)	B A	2 70
	235/55 R17	99V		(AO)	C B	2 71
	235/55 R18	100V			C C	1 67
	235/55 R18	100V			C B	2 71
SI	235/55 R18	100V			C B	2 71
R-F	235/55 R19	101V		(MOE)	C A	2 71
	235/55 R19	101V		(MO)	C A	2 71
	235/55 R19	101V		(MO)	B B	2 70
	235/55 R19	101Y		(NO)	B B	2 71
	235/55 R19	101Y		(AR)	C B	2 69
	235/55 R19	105V	XL	(VOL)	B B	2 71
	235/55 R19	105W	XL	(LR)	C B	2 69
	235/60 R17	102V		(MO)	C B	2 71
	235/60 R18	103V			B B	2 71
R-F	235/60 R18	103V		(MOE)	C B	2 71
	235/60 R18	103V		(MO)	C B	2 71
	235/60 R18	103W		(NO)	C B	2 71
	235/60 R18	107V	XL		B B	2 71
	235/65 R17	108V	XL		B B	2 71

- ALP Alpina
- AR Alfa Romeo
- RO1 Audi Quattro
- AO Audi
- MOE Mercedes Benz Original Extended Tyres
- MO Mercedes AMG
- NO/N1/N2 Porsche (+Vw Touareg)
- LR Landrover

			F	W	E	D
	235/65 R17	108V	XL	(VOL)	B B	2 70
	235/70 R16	106H			C B	2 71
	245/45 R20	103W	XL	(LR)	C B	2 69
	245/65 R17	111H	XL		C B	2 71
	245/70 R16	107H			C B	2 71
SI	255/40 R20	101V	XL		C B	2 71
SI	255/45 R19	100V			C B	2 71
R-F	255/45 R20	101W		(MOE)	C B	2 71
	255/45 R20	101W		(MO)	B B	2 71
	255/45 R20	101W		(AO)	C A	2 72
	255/45 R20	105W	XL		C B	2 72
	255/50 R19	103V		(MO)	B B	2 70
	255/50 R19	103W		(MO)	C B	2 72
	255/50 R19	103Y		(NO)	B B	2 72
R-F	255/50 R19	107W	XL	(*)	C B	2 72
	255/55 R18	105W		(NO)	C B	2 71
	255/55 R18	109V	XL	(*)	C B	2 72
R-F	255/55 R18	109V	XL	(*)	C B	2 72
	255/55 R18	109Y	XL		C B	2 71
	255/55 R19	111V	XL	(AO)	B B	2 71
	255/55 R19	111Y	XL	(AO)	C B	2 71
	255/60 R17	106V			C B	2 71
	255/60 R18	108W			B C	1 68
	255/60 R18	112W	XL	(MGT)	C B	1 70
	265/45 R20	104Y		(MO)	E A	2 72
	265/50 R19	110W	XL		B B	2 71
	265/60 R18	110H			C A	2 70
	275/35 R22	104W	XL	(VOL)	C C	2 73
NCS	275/35 R22	104W	XL	(VOL)	C C	1 70
	275/40 R21	107Y	XL		B B	2 72
	275/40 R21	107Y	XL		C B	2 71
NCS	275/40 R21	107Y	XL	(VOL)	C B	2 71
	275/45 R20	110W	XL		B B	2 71
	275/50 R20	109W		(MO)	C B	2 71
	285/40 R21	109Y	XL	(AO)	C B	2 71
R-F	285/45 R19	111W	XL	(*)	C B	2 71

- * BMW
- J Jaguar
- B Bentley
- VOL Volvo
- TO Tesla
- L Lamborghini
- MGT Maserati
- SI Seal Inside

			F	W	E	D
	285/45 R20	112Y	XL	(AO)	C B	2 71
	SCORPION ZERO ASIMMETRICO					
	235/45 R19	99V	XL		E C	2 72
NCS	235/45 R19	99V	XL		E C	2 72
	235/60 R17	102V		(MO)	C B	2 71
	255/45 R20	105V	XL		E B	2 72
	255/50 R19	107Y	XL		C C	2 72
	255/55 R17	104V		(MO)	C B	2 72
	255/55 R18	109H	XL	(AO)	C B	2 71
NCS	265/35 R22	102W	XL	(TO)	C B	2 72
	275/40 R20	106Y	XL		C B	2 72
	275/45 R20	110H	XL	(AO)	C C	2 72
	275/50 R20	113W	XL	(MO1)	B B	1 69
NCS	285/35 R22	106W	XL	(TO)	C B	2 73
	285/45 R21	113W	XL	(MO1)	B B	1 70
	295/30 R22	103W	XL		C B	2 74
	295/40 R22	112W	XL	(MO1)	B B	1 71
	305/35 R22	110Y	XL		B B	2 75
	SCORPION ZERO					
	235/60 R18	103V			E B	2 71
	255/50 R20	109Y	XL		C B	2 72
	255/55 R18	109V	XL	(NO)	E B	2 72
	255/55 R19	111V	XL		C C	2 72
	255/60 R18	112V	XL		E C	2 72
	275/55 R19	111V		(MO)	E C	2 72
	285/55 R18	113V			E C	1 72
	295/40 R21	111V	XL		C B	2 74
	295/40 R21	111V	XL	(MO)	C C	2 74
	SCORPION STR					
	235/50 R18	97H		(*)	E C	2 71
	235/55 R17	99H		(*)	E C	2 71
	SCORPION ATR					
	175/70 R14	88H	XL		C E	2 71
	185/75 R16	93T			E C	2 71
	205/80 R16	104T	XL		E C	2 71
	235/65 R17	108H	XL		E C	2 71

- XL Extra Load
- RFT Runflat
- NCS Noise Cancelling System
- WL White Lettering

			F	W	E	D
	255/55 R19	111H	XL	(LR)	C C	2 72
	255/60 R18	112T	XL		E C	2 72
	275/50 R20	113H	XL	(MO)	C C	2 73
	275/50 R20	113V	XL	(MO1)	C C	2 73
	325/55 R22	116H			E C	2 74
	SCORPION A/T+					
	225/65 R17	102H			E E	2 72
	235/65 R17	108H	XL		E E	2 72
	235/70 R16	106T			E E	2 72
	245/65 R17	111T	XL		E E	2 72
	245/70 R16	111T	XL		E E	2 72
	245/70 R17	110T			E E	2 72
	255/55 R19	111H	XL		E E	2 72
	255/60 R18	112H	XL		E E	2 72
	255/70 R16	111T			E E	2 73
WL	265/60 R18	110H			E E	2 72
	265/65 R17	112T			E E	2 72
WL	265/65 R18	114T			E E	2 73
	265/70 R16	112T			E E	2 73
	265/70 R17	115T			E E	2 72
	265/75 R16	116T			E E	2 72
WL	275/55 R20	113T			E E	2 72
WL	275/60 R20	115T			C E	2 72
	275/65 R17	115T			E E	2 72
WL	275/65 R18	116T			E E	2 72
	275/70 R16	114T			E E	2 72
	SCORPION ZERO ALL SEASON					
NCS	235/50 R20	104W	XL	(J)(LR)	A B	2 70
NCS	235/55 R19	105V	XL	(VOL)	B A	1 69
	235/55 R19	105W	XL	(J)(LR)	B C	2 72
	245/45 R20	103H	XL	(VOL)	B B	1 69
NCS	245/45 R20	103V	XL	(VOL)	B E	2 72
	245/45 R20	103W	XL	(J)(LR)	B B	2 72
NCS	245/45 R21	104W	XL	(J)(LR)	B B	2 72
NCS	235/55 R19	102V	XL	(VOL)	B B	1 70
	265/40 R22	106Y	XL	(J)(LR)	B B	2 72
	265/40 R22	106Y	XL	(J)(LR)	B B	2 72
	265/45 R21	104W		(J)(LR)	C B	2 72

- ALP Alpina
- AR Alfa Romeo
- RO1 Audi Quattro
- AO Audi
- MOE Mercedes Benz Original Extended Tyres
- MO Mercedes AMG
- NO/N1/N2 Porsche (+Vw Touareg)
- LR Landrover

			F	W	E	D
	265/45 R21	108Y	XL	(J)(LR)	B B	2 72
NCS	275/40 R23	109Y	XL	(LR)	B B	1 70
	275/50 R20	113V	XL	(MO)	B B	1 69
	275/55 R19	111V		(MO)	B B	1 69
	285/45 R21	113Y	XL	(L)	C B	1 69
	295/35 R22	108Y	XL	(J)	B B	2 73
	295/40 R21	111Y	XL	(J)	B B	2 72
	315/40 R21	115Y	XL	(L)	C A	1 69
	CINTURATO ALL SEASON PLUS					
S-I	215/55 R18	99V	XL		C B	1 69
S-I	215/60 R17	100V	XL		C B	1 69
	215/65 R16	102V	XL		C B	1 69
S-I	225/60 R17	103V	XL		C B	1 69
S-I	225/65 R17	106V	XL		C B	1 69
S-I	235/50 R18	101V	XL		C B	1 69
S-I	235/55 R17	103V	XL		C B	1 69
S-I	235/55 R18	104V	XL		C B	1 69
	SCORPION VERDE ALL SEASON					
	205/70 R15	96H			C C	2 71
	215/60 R17	96V			E C	2 71
	215/60 R17	100H	XL		C E	2 71
	215/65 R16	98H			C C	2 70
	215/65 R16	98V			C C	2 71
	215/65 R16	98V			E C	2 71
S-I	215/65 R17	99V			C C	1 69
	225/60 R17	99H			C C	2 71
	225/60 R17	103H	XL		C C	2 70
	225/65 R17	102H			E C	2 71
	225/65 R17	106V	XL		C C	2 71
	235/50 R18	97V			B C	2 71
NCS	235/50 R19	103V	XL	(VOL)	C C	2 70
	235/55 R17	99V			C C	2 71
	235/55 R18	104V	XL		C C	2 71
R-F	235/55 R19	101H		(MOE)	C B	2 71
	235/55 R19	101V		(NO)	B C	2 71
R-F	235/55 R19	101V		(MOE)	C B	2 70
R-F	235/55 R19	101V		(MOE)	C B	2 71
	235/55 R19	105V	XL	(LR)	C C	2 71

- * BMW
- J Jaguar
- B Bentley
- VOL Volvo
- TO Tesla
- L Lamborghini
- MGT Maserati
- SI Seal Inside

			F	W	E	D
	235/60 R16	100H			C C	2 71
	235/60 R18	103H			C C	2 71
R-F	235/60 R18	103H		(MOE)	C C	2 71
	235/60 R18	103V		(NO)	C C	2 71
R-F	235/60 R18	103V		(MOE)	C C	2 71
R-F	235/60 R18	103V		(MOE)	C B	2 70
	235/60 R18	107H	XL	(LR)	B C	2 71
	235/60 R18	107V	XL	(LR)	C C	2 71
	235/60 R18	107V	XL	(LR)	C C	2 71
	235/65 R17	108V	XL		C C	2 71
	235/65 R17	108V	XL		C C	2 71
	235/65 R18	110H	XL	(J)	B C	2 71
	235/65 R18	110V	XL	(J)	A C	2 71
	235/65 R19	109V	XL	(LR)	C B	2 72
	235/70 R18	110V	XL	(LR)	C E	1 69
	245/45 R20	99V		(LR)	C C	2 71
	245/45 R20	103V	XL	(LR)	C C	2 71

PATTERN & SIZES PIRELLI

				F	W	E	D
	265/60 R18	110H		C	C	2	72
	265/70 R16	112H		C	C	2	71
	275/40 R21	107V	XL (VOL)	C	C	2	73
NCS	275/40 R21	107V	XL (VOL)	C	C	2	73
NCS	275/40 R22	108Y	XL (LR)	C	B	2	71
	275/45 R20	110V	XL (VOL)	B	C	2	72
	275/45 R20	110V	XL (NO)	B	C	1	70
	275/45 R21	110W	XL (LR)	C	B	2	72
NCS	275/45 R21	110W	XL (LR)	C	B	2	72
	275/45 R21	110Y	XL (LR)	C	B	2	71
	275/50 R20	109H	(MO)	C	C	2	73
	275/50 R20	113W	XL (B)	C	C	1	70
NCS	285/40 R22	110Y	XL (LR)	B	E	1	70
	285/45 R21	113W	XL (BL)	B	B	1	68
	285/45 R21	113W	XL (B)	C	C	1	70
	285/50 R20	116V	XL	C	C	2	72
	285/60 R18	120V	XL	C	C	2	72
	295/40 R20	106V	(NO)	B	B	2	73
R-F	295/45 R20	110Y		C	C	2	73
	SCORPION ICE & SNOW						
	235/60 R17	102H	(MO)	E	C	2	71
	255/50 R19	107H	XL (MO)	E	C	2	72
	255/55 R18	109V	XL (N1)	C	B	2	72
R-F	275/40 R20	106V	XL (*)	E	C	2	73
	275/45 R20	110V	XL (MO)(NO)	C	B	2	72
R-F	285/35 R21	105V	XL	E	C	2	74
	295/40 R20	110V	XL	C	C	2	74
R-F	315/35 R20	110V	XL (*)	C	C	1	71
R-F	325/30 R21	108V	XL	C	C	2	74
	SCORPION WINTER						
	215/60 R17	100V	XL	C	C	2	71
	215/65 R16	102H	XL	C	C	2	71
	215/65 R17	99H		C	E	2	72
S-I	215/65 R17	99H		C	E	2	72
	215/70 R16	104H	XL	C	C	2	71
	225/55 R19	99H		C	C	2	72
	225/60 R17	103V	XL	C	C	2	72
	225/65 R17	102T		C	C	2	72

- ALP Alpina
- AR Alfa Romeo
- RO1 Audi Quattro
- AO Audi
- MOE Mercedes Benz Original Extended Tyres
- MO Mercedes AMG
- NO/N1/N2 Porsche (+Vw Touareg)
- LR Landrover

				F	W	E	D
	225/65 R17	106H	XL	C	C	2	72
	225/70 R16	103H		C	C	2	71
	235/50 R18	101V	XL (MO)	C	C	2	72
	235/50 R19	103H	XL	C	C	2	72
S-I	235/50 R19	103H	XL	C	C	2	71
	235/50 R20	104V	XL	E	B	2	70
	235/55 R18	104H	XL	C	C	2	72
S-I	235/55 R18	104H	XL	C	C	2	71
	235/55 R19	101H	(MO)	C	C	2	71
	235/55 R19	101H	(AO)	E	B	2	70
	235/55 R19	101V	(NO)	C	C	2	72
	235/55 R19	101V	(AR)	E	B	2	72
	235/55 R20	105H	XL	C	C	2	72
	235/55 R20	105H	XL	C	C	2	72
	235/60 R17	106H	XL	C	C	2	72
R-F	235/60 R18	103H		E	C	2	71
	235/60 R18	103H	(MO)	C	C	2	72
	235/60 R18	103H	(MO)	C	B	1	69
	235/60 R18	103V	(NO)	C	C	2	72
	235/60 R18	103V	(AR)	E	B	2	70
	235/60 R18	107H	XL	B	C	2	72
	235/65 R17	104H	(MO)	C	C	2	72
	235/65 R17	104H	(AO)	E	B	2	71
	235/65 R17	108H	XL	C	C	2	72
	235/65 R17	108H	XL (N1)	C	C	2	72
	235/65 R17	108H	XL (AR)	C	B	2	72
	235/65 R18	110H	XL (J)	C	C	2	72
	235/65 R19	109V	XL	C	C	2	72
	235/70 R16	106H		C	C	2	71
	245/45 R20	103V	XL	C	B	2	72
NCS	245/45 R21	104V	XL	C	B	2	70
	245/50 R20	105H	XL (J)	C	B	2	72
	245/60 R18	105H		C	B	2	72
	245/65 R17	111H	XL	C	C	2	72
	245/70 R16	107H		C	C	2	72
	255/40 R19	100H	XL	C	B	2	72
	255/40 R21	102V	XL	C	B	2	72
	255/40 R22	103H	XL (J)	C	B	2	72

- * BMW
- J Jaguar
- B Bentley
- VOL Volvo
- TO Tesla
- L Lamborghini
- MGT Maserati
- SI Seal Inside

				F	W	E	D
R-F	255/45 R20	101H		E	B	2	72
	255/45 R20	101V	(AO)	C	B	2	72
	255/45 R20	101W	(AR)	C	B	2	72
	255/45 R20	105V	XL	C	B	2	72
	255/45 R20	105V	XL (ALP)	C	B	2	71
	255/50 R19	103H	(MO)	C	C	2	71
	255/50 R19	103V	(NO)	C	C	2	72
	255/50 R19	107V	XL	C	C	2	72
	255/50 R19	107V	XL (N1)	C	C	2	72
	255/50 R19	107V	XL (MO)	C	B	1	69
R-F	255/50 R19	107V	XL (*)	C	B	2	73
	255/50 R20	109H	XL (AO)	C	C	2	72
	255/50 R20	109V	XL (J)	C	C	2	72
	255/55 R18	105V	(NO)	C	C	2	72
	255/55 R18	109H	XL (*)	C	C	2	72
R-F	255/55 R18	109H	XL (*)	C	B	2	73
	255/55 R18	109V	XL	C	C	2	72
	SCORPION WINTER (Continued)						
	255/55 R19	111H	XL (AO)	C	C	2	72
	255/55 R19	111V	XL (NO)	B	B	1	69
	255/55 R19	111V	XL (J)	C	C	2	72
	255/55 R20	110V	XL	C	B	2	73
	255/60 R18	108H	(AO)	C	C	2	72
	255/60 R18	112H	XL (MO-V)	B	C	2	72
	255/60 R18	112H	XL (J)	C	C	2	72
	255/60 R18	112V	XL (MGT)	C	C	2	72
	255/65 R17	110H		C	C	2	72
	255/65 R17	110H	(MO-V)	C	C	2	72
	265/35 R22	102V	XL	E	B	2	73
NCS	265/35 R22	102V	XL	C	C	2	72
	265/40 R21	105V	XL (MO1)	C	C	2	73
	265/40 R21	105V	XL (MGT)	C	C	2	73
	265/40 R22	106W	XL (J)(LR)	C	C	2	73
	265/45 R20	104V	(NO)	E	C	2	72
	265/45 R20	104V	(MGT)	E	C	2	72
	265/45 R20	108V	XL (MO)	C	C	2	72
	265/45 R21	108W	XL (J)(LR)	C	C	2	73
	265/50 R19	110V	XL (NO)	C	C	2	72

- XL Extra Load
- RFT Runflat
- NCS Noise Cancelling System
- WL White Lettering

				F	W	E	D
	265/50 R19	110V	XL (MGT)	C	C	2	72
	265/50 R20	111H	XL	C	C	2	72
	265/55 R19	109H	(MO)	C	A	1	69
	265/55 R19	109V	(MO)	C	C	2	72
	265/60 R18	114H	XL	C	C	2	72
	265/65 R17	112H		C	C	2	72
	265/70 R16	112H		C	C	2	73
	275/35 R22	104V	XL	C	B	2	73
	275/40 R20	106V	XL	C	C	2	72
R-F	275/40 R20	106V	XL	E	C	2	73
	275/40 R20	106V	XL (N1)	C	C	2	72
	275/40 R21	107V	XL	C	B	2	73
	275/40 R21	107V	XL (NO)	C	B	1	69
	275/40 R22	108V	XL	C	B	2	73
	275/45 R19	108V	XL	C	C	2	72
	275/45 R20	110V	XL (NO)	C	B	1	69
	275/45 R21	107V	(MO)	C	B	2	71
	275/45 R21	110V	XL	C	B	2	73
	275/45 R21	110V	XL (MO)	C	B	2	73

- ALP Alpina
- AR Alfa Romeo
- RO1 Audi Quattro
- AO Audi
- MOE Mercedes Benz Original Extended Tyres
- MO Mercedes AMG
- NO/N1/N2 Porsche (+Vw Touareg)
- LR Landrover

				F	W	E	D
	275/50 R19	112V	XL (NO)	B	B	1	69
	275/50 R20	109V	(MO)	C	B	2	73
	275/50 R20	113V	XL (MO)	C	B	1	69
	275/55 R19	111H	(MO)	C	B	1	70
	285/35 R22	106V	XL	C	B	2	73
NCS	285/35 R22	106V	XL	C	C	2	73
	285/40 R20	104W	(AR)	C	B	2	73
	285/40 R20	108V	XL (ALP)	C	B	2	73
	285/40 R20	108V	XL (*)	E	B	2	75
	285/40 R21	109V	XL	E	C	2	73
	285/40 R22	110V	XL	C	C	2	73
	285/40 R22	110W	XL (L)	C	B	1	67
	285/45 R19	111V	XL	C	C	2	73
R-F	285/45 R19	111V	XL	C	B	2	73
	285/45 R20	112V	XL (AO)	C	C	2	73
	285/45 R21	113W	XL (B)	C	B	2	73
NCS	285/45 R22	114V	XL (MO-S)	C	B	2	73
	285/45 R22	114V	XL (MO)	C	B	2	73
	295/30 R22	103V	XL	E	B	2	73
	295/35 R21	107V	XL (MO1)	C	C	2	73

- * BMW
- J Jaguar
- B Bentley
- VOL Volvo
- TO Tesla
- L Lamborghini
- MGT Maserati
- SI Seal Inside

				F	W	E	D
	295/35 R21	107V	XL (MO)	C	C	2	73
	295/35 R21	107V	XL (MGT)	C	C	2	73
	295/35 R22	108W	XL (J)	C	C	2	73
	295/40 R20	106V	(NO)	E	C	2	73
	295/40 R20	106V	(MGT)	E	C	2	73
	295/40 R21	111V	XL	C	B	2	75
	295/40 R21	111W	XL (J)	C	C	2	73
	295/45 R19	113V	XL (MGT)	C	C	2	73
	295/45 R20	114V	XL	C	C	2	73
	305/35 R21	109V	XL (NO)	C	B	1	69
	305/40 R20	112V	XL (NO)	C	B	1	69
	315/30 R22	107V	XL	C	B	2	74
R-F	315/35 R20	110V	XL	C	C	2	73
	315/40 R21	111V	(MO)	C	B	2	73
	315/40 R21	111V	(MO)	C	B	1	71
	315/40 R21	115V	XL (MO)	B	B	2	75
	325/35 R22	114W	XL (L)	C	B	1	68
	325/55 R22	116H	(MO)	E	E	1	72

- XL Extra Load
- RFT Runflat
- NCS Noise Cancelling System
- WL White Lettering



All specifications in this catalogue are correct at the time of going to press but may be subject to alteration without notice. Whilst every care has been exercised in the production of this catalogue, Micheldever Tyre Services Ltd. Cannot accept liability for any errors or omissions. No part of this publication may be reproduced by any means, including printing, copying, electronic or digital processes without the written consent of the publishers. © Micheldever Tyre Services Ltd. 2019.

CONTACT



call:
0370 845 8458

or visit:
www.nfuonline/4x4tyres

